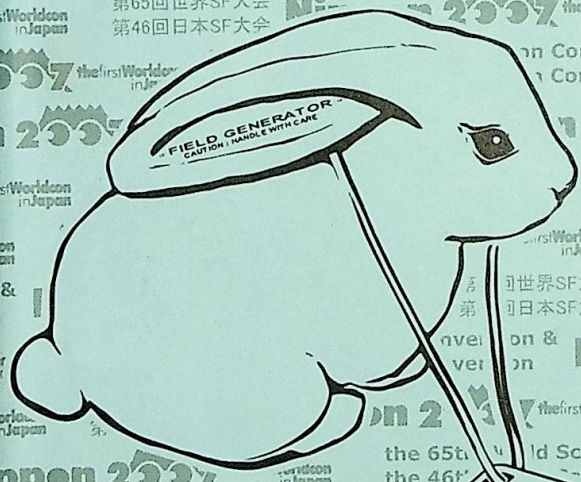


POCKET

ポケットプログラムガイド

PROGRAM GUIDE

in ENGLISH



# Table of Contents

## 4 - Pacifico YOKOHAMA MAP

- Exhibition Area

## 5 - Hall A 1F Concourse MAP

- Registration ○ Information
- Move in / Move out

## 6 - Hall A 1F MAP

- Dealer's Room

## 7 - Art Show

- Demonstration ○ Print Shop
- Auction
- YAMATO TRANSPORT CO., LTD.

## 8 - Exhibition

- Nippon2007 Official Goods Sales
- Bid / Fan Tables
- Site Selection
- Changing Room

## 9 - Hall A 2F Concourse MAP

- Autographs

### Hall A 2F Harbor Lounge A MAP

- Cafe ○ Filk ○ Bid Party

### Harbor Lounge B MAP

- Games

## 10 - Conference Center 1F

### Main Hall MAP

- Opening / Closing Ceremonies
- Hugo Awards ○ Seiun Awards Ceremony ○ Masquerade ○ Cloak Room

## 11 - Fanzin Alley MAP

- First Aid ○ Business Centre

## 12 - Conference Center 2F MAP

- Volunteer Desk
- Voodoo & Party Board
- Newsletter ○ Con Suite

## 13 - Nippon2007 Weapons Policy

- Hall Costume Rules

## 14 - Conference Center 3F MAP

- Registration
- Volunteer Lounge ○ Staff Lounge

- At-Con Office ○ Internet Lounge
- Operation ○ Green Room
- Fan Gallery ○ The Portrait Gallery
- Kaffeeklatsches ○ Autograph session
- Readings

## 16 - Conference Center 4F MAP

- Child program
- Babysitting
- Anime ○ Film Program

## 17 - Conference Center 5F Small Auditorium MAP

- Ceremony ○ Live Concert

## 18 - Inter Continental The YOKOHAMA 6F MAP

- Party Schedule
- Handicapped Access
- Smoking Room
- Food & Drink

## 19 - Schedule & Grid

- 19 - ○ Thursday, August 30
- 27 - ○ Friday, August 31
- 35 - ○ Saturday, September 1
- 43 - ○ Sunday, September 2
- 51 - ○ Monday, September 3

## 53 - PROGRAMS

- 53 - ○ Thursday, August 30
- 58 - ○ Friday, August 31
- 69 - ○ Saturday, September 1
- 79 - ○ Sunday, September 2
- 88 - ○ Monday, September 3

## 90 - Participant Index

## 98 - My Schedule

# Nippon2007

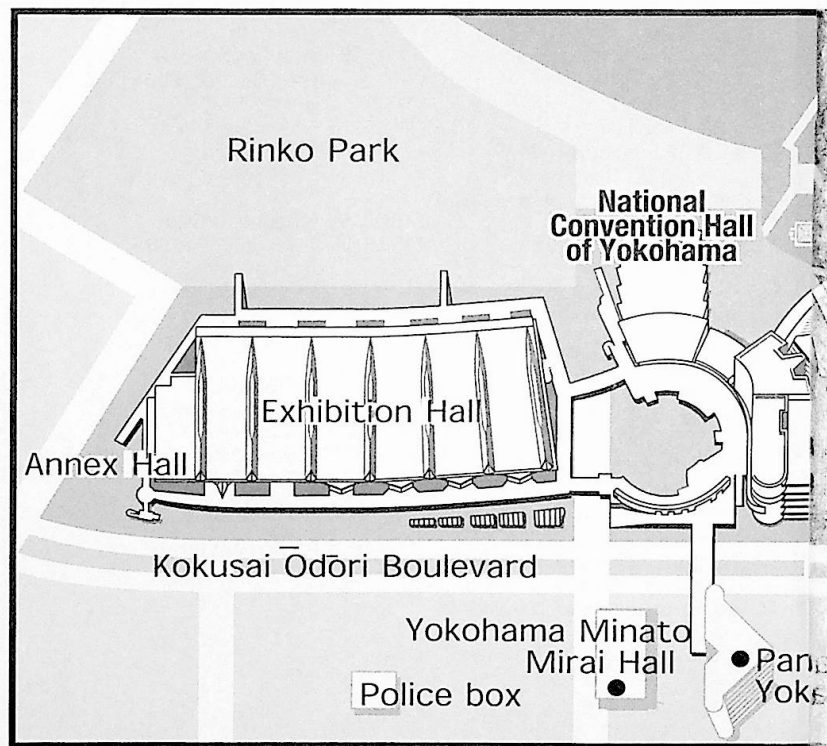
## Welcome to Nippon2007

The venues for Nippon 2007 are the Pacifico Yokohama Conference Centre and Exhibition Hall. These venues are not immediately adjacent to each other but are within the same complex, so getting around should be fairly easy. A bridge connects them on the 2nd floor level.

The Exhibits, Dealers Room and Art Show will all be in Exhibition Hall A. This Hall will be open both to attendees and members of the public during the day (but will be members only

during the evening) so please note that there will be people walking around not wearing a name tag (badge). We decided to open the Hall to the public to let them know about Worldcon and create an opportunity for communication between members and local residents.

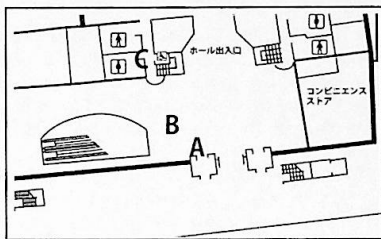
Exhibition HallWorldcons and create an opportunity to communicate with attendants and Yokohama Citizens.



# Exhibition Hall A 1F Concourse

## A. Nippon 2007 Registration

Your name will be written on your tag (badge) in both English alphabet and Japanese katakana script. We will check that you are wearing your tag before allowing entry to some areas of the convention. Please be sure to bring your name tag (badge) and wear it where it can clearly be seen when entering these areas. Without your name tag (badge) you will not be allowed to enter.



## Registration Hours:

Conference Centre 3F/301:

Thursday 10:00am ~ 8:00pm

Exhibition Hall 1F Concourse:

Friday 9:30am ~ 7:00pm

Saturday 9:30am ~ 8:00pm

Sunday 9:30am ~ 7:00pm

Monday 9:30am ~ 12:00pm

karisanbashi Pier  
a Bass Terminal

Inter Continental  
The Grand Yokohama

Conference  
Center

Kokusaibashi  
Bridge

cific Hotel  
ma

Yokohama  
Cosmo World



## B. Information Desk

We will have Information Desks in both the Exhibition Hall Concourse (1F) and the Conference Centre (2F). Sign up for kaffeeklatsches, flower arranging etc. will be at the Conference Centre desk.

Information Desk Hours:

Thursday 9:00am ~ 8:00pm

Friday 9:00am ~ 7:00pm

Saturday 9:00am ~ 8:00pm

Sunday 9:00am ~ 7:00pm

Monday 9:00am ~ 7:00pm

## C. Move-in/Move-Out Desk

Desks to coordinate Move-in and Move-out of materials to the site will be open on Thursday and Monday in the Exhibition Hall Concourse.

Thursday 9:00am ~ 4:00pm

Monday 2:00pm ~ 6:00pm

# Nippon2007

## Hall A

The Exhibition, Dealers Room and Art Show will be in Exhibition Hall A. This will be a public area open to both attending members and the general public, so please note that there will be people around not wearing a name tag (badge).

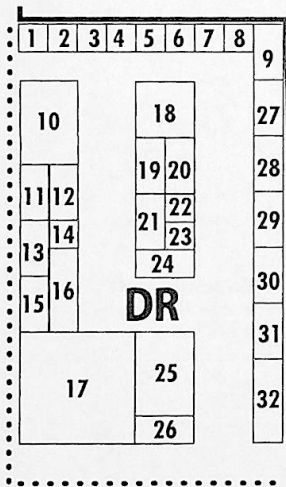
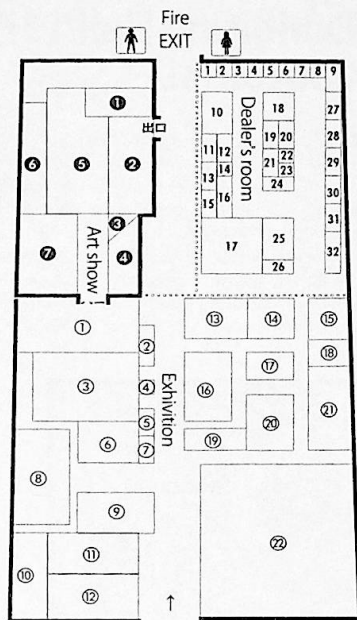
Hall A Hours:

- Thursday 4:00pm ~ 7:00pm (public)/  
10:00pm (members)
- Friday 10:00am ~ 6:00pm (public)/  
9:00pm (members)
- Saturday 10:00am ~ 6:00pm (public)/  
9:00pm (members)
- Sunday 10:00am ~ 6:00pm (public)  
9:00pm (members)
- Monday 10:00am ~ 1:00pm (public and  
members)

### Dealer's Room

Everything for sale from clothes to books to CDs to jewellery. Bring your money and take home a souvenir.

List of Dealers



### < LIST >

- DR-01 G-Phone
- DR-02 DRAGON GALLERY
- DR-03 Bukimisha The Secet Society
- DR-04 CRASH & BURN
- DR-05
- DR-06
- DR-07 Masako Aoyagi (ARAKAWA MAGIC)
- DR-08 KOIMarketing Inc.
- DR-09
- DR-10FX.LTD.
- DR-11
- DR-12Laputa Co., Ltd.
- DR-13Pan Rolling
- DR-14 K-I-gurumi-ya
- DR-15 Locus Magazine
- DR-16 Thelema Aura, Inc
- DR-17 ARTVIVANT Co.Ltd
- DR-18 Kinokuniya Co.Ltd.
- DR-19 Happinet Corporation
- DR-20 Tachyon inc.
- DR-21 KUMANOJO
- DR-22
- DR-23
- DR-24 Comiket Service B-Maniacs
- DR-25 MAIMU. CO. Ltd.
- DR-26 United International Pictures (Far East)
- DR-27 SHUEISHA INC. Translated Books Division
- DR-28 Kurodahan Press, Intercom.Ltd.
- DR-29 Anime Channel Co., Ltd
- DR-30
- DR-31 CIECUS CO., Ltd.
- DR-32 COSPA + COSPATIO

## Art Show

The Art Show is an exhibition of artwork of science fiction and fantasy created by professional and amateur artists from around the world. Art by the Guests of Honour, Mr. Yoshitaka Amano and Mr. Michael Whelan, and those nominated for the 2007 Hugo and Chesley Awards will be included in the Art Show. A ballot for Best Work in the Show will be available to members: please vote!

### Attention:

No Photography, No Eating, No Drinking in the Art Show.

### Demonstration:

Some "Live Art" demonstrations of the creative process will be held in the Art Show. Please see the displayed schedule in the Show for details.

### Print Shop:

Prints will be available for sale at fixed price in the Print Shop area of the Art Show.

#### Art Show Hours:

Thursday	9:00am - 12:00pm Setup
	12:00pm - 4:00pm Artist Check-In
	4:00pm - 7:00pm Open
Friday	10:00am - 6:00pm Open
Saturday	10:00am - 6:00pm Open
Sunday	10:00am - 1:00pm Open
	1:00pm - 2:00pm Auction Setup
	2:00pm - 3:00pm Auction
	3:00pm - 6:00pm Art Payment /Pickup
	6:00pm - 7:00pm Artist Pickup
Monday	10:00am - 12:00pm Artist Pickup

#### Exhibit Areas in the Show:

1. Studio Ghibli "Tales of Earthsea"
2. Auction and "Live Art" Area
3. Tsuyoshi Nagano
4. GoH Exhibits
5. Main Show Panels
6. Main Show Tables
7. Art Show Admin, Information and Print Shop

## Auction

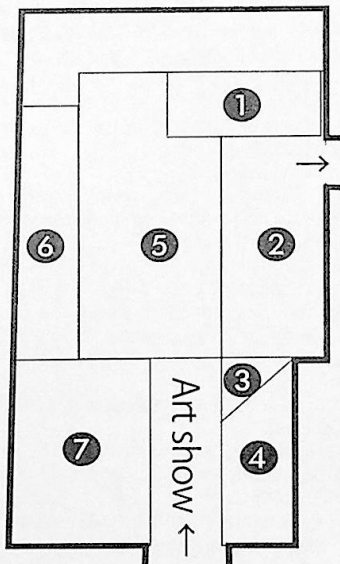
A major feature of the Art Show is sales of some of the exhibited art works. You must be a member of the convention to bid on items, and must register with the Art Show as well. Pieces with five bids will be placed in the live auction, otherwise if you have the highest bid you have agreed to buy the piece at that price. Please see the instructions in the Art Show about bidding.

### Yamato Transport:

Yamato Transport Co. Ltd will have a desk in the Exhibit Hall, near the emergency exit, for members to arrange shipping home of purchased items, including artwork.

#### Shop Hours

Friday - Sunday	10:00am - 6:00pm
Monday	10:00am - 1:00pm



# Nippon2007

## Exhibits

The Fixed Exhibits area of Exhibition Hall A includes exhibits about the GoHs Mr. David Brin, Sakyo Komatsu-san and Takumi Shibano-san, SF fandom in Japan and around the world, and professional

## Nippon 2007 Official Goods Sales

Souvenirs of the Worldcon are available for purchase. Merchandise may include T-shirts, hats, phrase books, toys, cookbooks and a wealth of other materials.

## Bid and Fan Tables

Groups bidding to hold future conventions will have a desk to provide information about their proposal, sell pre-supporting memberships and may offer bid merchandise for sale. Fan clubs and future conventions will also be there to provide information and memberships.

## List of Exhibits

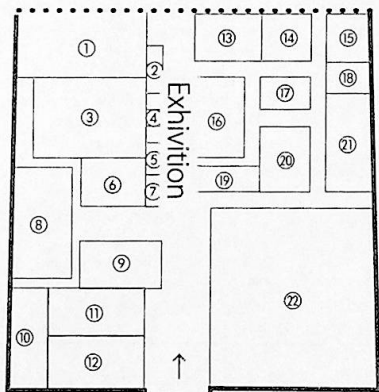
1. GoH Exhibits
2. Exhibition of Works "Around the Undersea World: Nautilus Design Contest" (N-con)
3. Fanhistory: Worldcon and Japanese Convention Exhibit
4. Winners of The James Tiptree, Jr. Award and The Science of Gender (SOG) Award
5. A collection of cover illustrations from the classic to the latest, Japanese and foreign SF.
6. Worldcon Site Selection
7. City of Yokohama
8. Shinji Ogawa's "Chain World"
9. Future Convention Fan Tables
10. Costume Changing Rooms
11. Social Space (inc "Let's Connect!" DS/PSP Area)
12. Lunatic Systems' "Welcome to Akihabara" Maid Cafe
13. Nippon 2007 Sales to Members
14. Nippon 2007 Sticker Shop
15. Social Space
16. ULTRAMAN SERIES 40TH ANNIVERSARY
17. Demonstrations of MANOI
18. Worldcon Costumes
19. The Heinlein Cafe

## Changing Rooms

Small changing rooms (one for men, one for women) will be available in the Exhibit Hall. These are for members only, to allow them to change into and out of costumes at the convention site.

## Site Selection

The location of the Worldcon is selected two years in advance by a vote of the Supporting and Attending members of the current worldcon. This year's election is being administered by Nippon 2007, for the right to hold the 2009 Worldcon. The groups bidding are Montreal, Quebec, Canada and Kansas City, Missouri, USA. A fee ( \$45.00) is charged for voting in Site Selection. This fee purchases a supporting membership in the winning Worldcon. The voting continues through 7:00pm Saturday. The winner will be announced at Sunday morning's WSFS Business Meeting. All voters become supporting members of the selected Worldcon, no matter which bid wins.

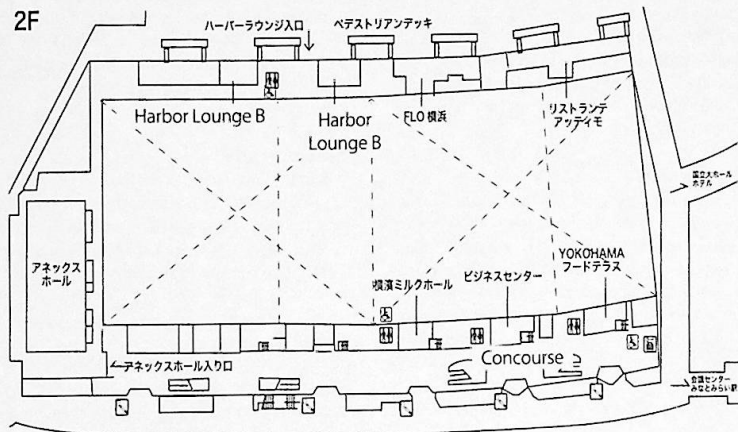


20. Social Space
21. M-02 Exhibit (OpenSky Project)
22. Comic Market / Yoshihiro Yonezawa Exhibit  
Women of Japan Photo Exhibit

## Hall 2F Concourse

### Autographs

A special autographing area for items bought from Laputa and Fine Molds is available on the second floor of the Exhibition Hall. George Takei will also be signing here (items available for sale at the time).



## Hall 2F Harbor Lounge A

### CAFE Scifi + tique

Thursday 12:00pm ~ 6:00pm  
 Friday 10:00am ~ 6:00pm  
 Saturday 10:00am ~ 3:00pm  
 Sunday 10:00am ~ 6:00pm  
 Monday 10:00am ~ 12:00pm

### Filk

The more musical people in fandom love to sing about their hobby, sometimes creating new tunes and sometimes using existing tunes with new words. All levels of singers and musicians welcome.

### Bid Party

To gain the support of potential voters, groups sponsor social functions at conventions (especially at Worldcons). Bid parties are the core of a Worldcon's evening social activities. Bid parties will be in the Harbor Lounge on Thursday evening, and at the Hotel Intercontinental on Friday and Saturday nights. The winner of the 2009 site selection race will host a party on Sunday night in the Intercontinental Hotel.

## Harbor Lounge B

### Games

Many science fiction fans like to play games. Some old favorites will be revisited and some new games will be introduced. There are also some program items about games.

Friday ~ Sunday 10:00am ~ 6:00pm



# Nippon2007

## Conference Center 1F

### Opening / Closing Ceremonies:

The main theater in the Pacifico Yokohama Conference Center will be the site of Opening Ceremony on

Thursday 7:00 p.m.

Please come and join the festivities.

Closing Ceremonies are the last event of this year's Worldcon. They will be held at

Monday 12:00pm

### Hugo Awards

The Hugo Awards, named for pulp magazine editor Hugo Gernsback, are given for the best in the field of science fiction and fantasy. Members of L.A.con IV and Nippon2007 were eligible to nominate a slate of potential award winners. The winners were decided by mail-in ballot of Nippon 2007 members. The awards in 2007 are given for work published in 2006. In addition to the Hugo Awards, the First Fandom, the Big Heart and the Campbell Awards are presented during

this ceremony. The Hugo Awards Ceremony will be

Saturday 6:00 p.m.

### Seiun Awards Ceremony:

The Seiun Award is the major Japanese award for science fiction and fantasy. Seiun Award winners are selected by vote of the members of the Japanese National Science Fiction Convention. Seiun is the Japanese word for 'nebula.' The Seiun Awards Ceremony will be held on

Sunday 12:00pm

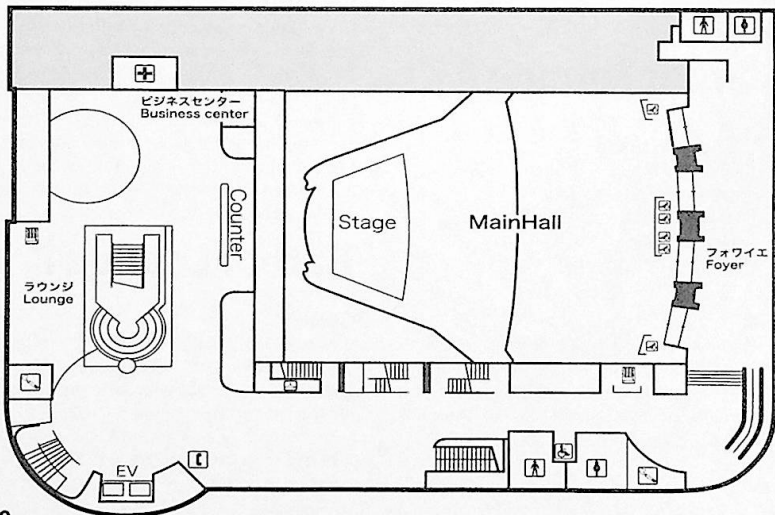
### Masquerade

Sunday September 2nd 15:00 -

SF and Fantasy-related costumes presented with short performances. Prizes will be awarded for workmanship and ideas. Details of previous competitive showings must be provided for entries.

### Cloak Room

Nippon 2007 provides a cloak room for members who wish to store things for a short time instead of returning them to their hotel. You



should not store anything of significant value in the cloak room. No responsibility for your stored materials is accepted by the Nippon 2007 Committee.

## Business Centre

The Business Centre, on the 1st Floor of the Conference Centre has fax, copying and internet services available (at a price).

## Fanzine Alley

Space for selling the creation of fans, such as personal publishing books, movies, goods, fanzines, etc. Enjoy shopping and communication!

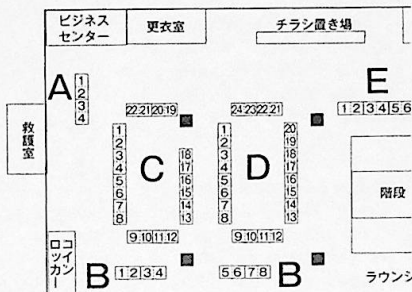
Thursday 12:00pm ~ 6:00pm

Friday ~ Sunday 10:00am ~ 6:00pm

Monday 10:00am ~ 12:00pm

## First Aid

For minor injuries, please approach the Pacifico Yokohama Conference Centre staff on the 1st Floor, where they have a first aid station. For more serious issues, please talk to Pacifico Yokohama staff who will arrange to call an ambulance.



## Circle List :

- |                           |                                |                              |
|---------------------------|--------------------------------|------------------------------|
| B-4. D-Tomo no Kai        | C-11. Amarimono                | C-17. Tenarai-Sousi          |
| E-3. Fried Rice Paradise  | D-13. AmeComi Koujyou linkai   | B-7. Toukai SF no Kai        |
| D-9. IFCON Tolkien        | B-8. Isinomoti-ARCHIVE         | D-23. ToyoCollg SFKenkyu-kai |
| D-2. J・R・R・               | D-6. Ibaraki Colleg Technorogy | D-7. To-gakkai               |
| Tolkien Kenkyu-kai        | SF Club OB-kai                 | E-5. Nijyu-r-Rasen Toshokan  |
| Siro no Norite            | C-22. Uchu-jin                 | C-4. Neko-ei Jimukyoku       |
| A-3. MEGA DRIVERS         | D-22.Uchu-dame-Sakusen         | A-1. Nuiburumi sinpo-sya     |
| D-20. MINX                | B-6. Kamen-Tokkou-Tai          | + ⊕ SF ⊙                     |
| C-5. Otaku SAVE THE WORLD | A-2. Kikaku Sien Kikou         | D-21. Neko Trek              |
| D-24. PAEADOX             | D-10. Canp・オールドリン              | D-3. Novel・Air               |
| C-12. PROLJECT・A-7        | C-14. Koubou shinowazuri       | D-5. Hashimoto Sathiko       |
| D-15. rImdi               | B-5. Gosityun wo Mederu Kai    | D-16. Higashi Canal Simin no |
| (Rhodan Kenkyu-kai MDI)   | D-4.Komatsu Sakyo Collegium    | Kai                          |
| D-1. Rolarious            | C-16. Junk・Yard                | D-14. Hitori MAGY            |
| C-15. SF6                 | C-13. Jin-rui-ken              | D-11. Himitu-kessya AAA      |
| C-9. SF Anthology Comic   | C-21. Seikai Kigyou            | E-6. Fukan-zen Kaku-shi      |
| Jimukyoku-ku              | E-1. Souei Kai                 | E-2. Buddha Den-nei          |
| B-3. SGW                  | D-18. SobiCu                   | C-3. Furug moon              |
| C-8. Stadio Cocoon        | C-1. Tamakiya                  | C-19. Honyaku Jidou bungaku  |
| C-2. Stadio Do-Do         | E-4. Chahan Tengoku            | Kenkyu                       |
| D-8. TDSF                 | D-12. Chine V Yokohama         | B-1. Maneki-neko SF Fan Club |
| C-6. UPSIDE DOW           | Office                         | D-19. Mikan no Kan-zume      |
| C-18. XAT・STEW            | B-2. Chubu NipponSF            | C-10. Me-GUMONPE             |
| C-20. Arthur・Ransom・Club  | Doukoukai Mutants Club         | C-7. Raoshiahon              |

# Nippon2007

## Conference Center 2F

### Volunteer Desk

The Worldcon runs on volunteer labour. Please drop by the Volunteer Desk in the Conference Centre (2F).

Thursday 9:00am ~ 8:00pm

Friday 9:00am ~ 7:00pm

Saturday 9:00am ~ 8:00pm

Sunday 9:00am ~ 7:00pm

Monday 9:00am ~ 2:00pm

### Voodoo & Party Board

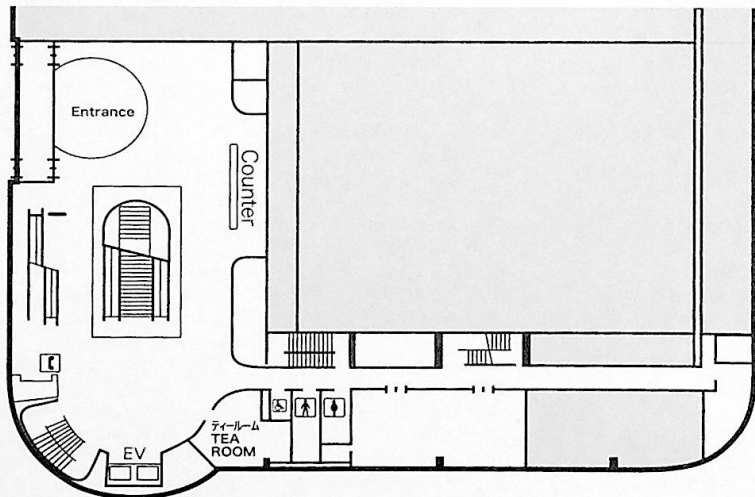
Voodoo Board: Bulletin boards and boxes of file cards are used to communicate with other convention members. The voodoo board was invented by Erwin S. "Filthy Pierre" Strauss. Members use file cards and pins to communicate with other members through an alphabetic printout of attendees which is displayed on a bulletin board.

### Newsletter

As always, Nippon 2007 will have its own Newsletter. Program changes and party announcements will be made in the newsletter, as well as reports of major events at the con. This will be published in separate English and Japanese versions. Contributions of information, articles and photos are welcome: please bring them to the newsletter room on the second floor of the Conference Centre.

### Con Suite

Con Suite: A designated place, run by the convention committee, at which convention attendees can meet each other in a relaxed environment. The Con Suite operates from 10:00 a.m. until 6:00 p.m. and is a nice place to go to meet other fans and relax, or work on a jigsaw puzzle. Light snacks are available in some Con Suites. Nippon 2007's Con Suite is located in rooms 211 and 212.



## Hall Costume Rules

Nippon 2007 WorldCon welcomes costumers, and we want to make sure everyone has an enjoyable time. Because we are concerned about the safety of everyone, we have the following weapons policy to increase everyone's safety and enjoyment. All members/attendees of Nippon 2007 must follow the Weapons Policy.

Keep this rule in mind: If a weapon or piece of armor can actually cut or harm someone, the weapon/armor is not allowed anywhere on the convention site.

Items/weapons whose possession are prohibited by Japanese law and/or considered to be dangerous will be confiscated and not returned to you, and you could possibly be arrested if you try to bring them into the country.

Prohibited weapons include:

Guns: hand guns, rifles, machine guns, cannons, shot guns, and other guns which have the capability to shoot projectiles/bullets.

Knives/Swords: sword, spear, or pole sword whose blade is longer than 15 centimeters (6 inches), daggers, and switchblades with actual edges to them.

Bows: bows, bowguns, blowguns, and slingshots which have the capability to shoot arrows, stones, or other projectiles.

Even prop weapons which mimic actual weapons may be confiscated. Consult with the Masquerade Director if you have any questions. When walking around the convention site with costume weapons:

All weapons must be holstered or sheathed, so they do not seem threatening.

All weapons must be secured, so that no one can unexpectedly remove a weapon from its holster or sheath. Only the owner of the weapon should be able to remove it for photographic purposes.

The Japanese are more modest than people in other parts of the world, and do not seek to attract attention to themselves. So the American tradition of "freaking the mundanes" will not be well received here. When outside the convention area, please consider covering up costumes that you wear that can cause unpleasant feelings, disrupt public order, or go against Japanese custom. Keep anything that looks like a real weapon, such as a sword or gun, covered. We do not want to have any misunderstandings because of this.

What the Japanese call Hall Cosplay, Americans call Hall Costuming. This is the wearing of costumes in the hallways of the convention area and convention hotel. The Masquerade is a more formal presentation of costumes. Please keep in mind:

If a prop or part of your costume can actually hurt someone, it is not allowed. See the weapons policy following the Masquerade rules.

When not on the Masquerade stage, please keep costumes resembling the uniforms of Japanese public officials (such as police, fire dept., JSDF etc.) covered with an overcoat to prevent any confusion or misunderstandings.

If you wear costumes that can cause unpleasant memories (such as post-1930s military uniforms), please keep them covered to avoid offending people's feelings outside of the convention center.

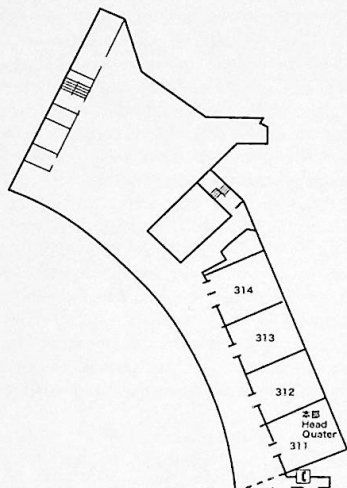
Please keep revealing costumes covered when not on the Masquerade stage.

When wearing revealing costumes, be sure to wear underwear.

Japan participates in the Washington Convention, which bans the importation or exportation of endangered plant and animal species. You can not bring in the listed animals, their fur or skin, birds, or plants into Japan. Please refer to <http://www.cites.org/eng/app/index.shtml> for banned items.

# Nippon2007

## Conference Center 3F



### At-Con Office

At-Con Office: The administrative tasks necessary for a successful convention are coordinated in the At-Con office. Members who need assistance can request help in the At-Con Office, which is located in room 311.

### Internet Lounge

There is an internet lounge on the 3rd floor of the Conference Centre, on the Exhibit Centre side of the building, which will have a wireless LAN in operation. There will be several Macs available for general use, as well.

### Registration

Registration will be on the 3rd floor of the Conference Centre on Wednesday 29th and Thursday 30th August.

Wednesday 12:00pm - 6:00pm

Thursday 10:00am - 8:00pm

Volunteers should register with the convention before starting work. From Friday morning, registration will be in the Concourse of the Exhibit Hall.

### Volunteer Lounge

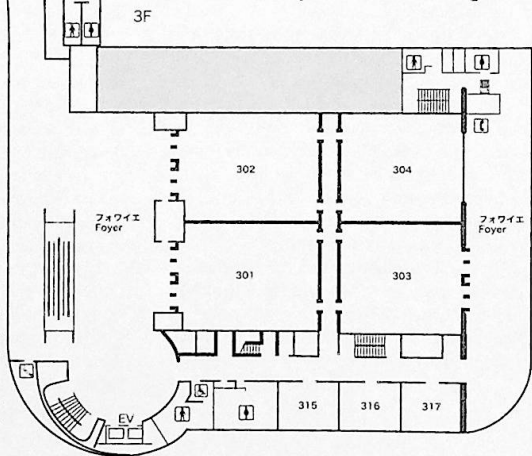
Volunteers get to hang around in the Volunteer Lounge on the 3rd floor of the Conference Centre, waiting for urgent calls for help. You can also sign up for shifts in various departments in the Lounge.

### Green Room

Limited to program participants. A place for participants to discuss their items before the go on stage.

### Staff Lounge:

A place where the convention committee and staff members can retreat from convention stresses. The staff lounge offers a place to relax and eat a quick snack or beverage.



**Operation**

Operations: The convention department that helps to ensure the smooth operation of the convention within all of its venues. Operations staff provides services that are necessary to a successful convention.

**Fan Gallery:**

Photographs of prominent fans. The galleries help to maintain the historical context of fandom.

**The Portrait Gallery:**

Photographs of professionals in the science fiction community. A brief biography is provided with each photograph.

**Readings:**

A scheduled time slot during which writers read excerpts of their work. Readings can provide fans an intimate experience with the writings of their favorite writers or give them a chance to learn about a new author.

**Kaffeeklatsches**

Kaffeeklatsch: An opportunity to meet with and talk to program participants and up to ten other members of the convention. These sessions are arranged by the convention's programming team. Kaffeeklatsches allow professionals and fans a chance to chat in a more informal setting than a panel discussion; these discussions will be in room 304. Fans who wish to join a kaffeeklatsch must sign-up in advance of the scheduled time at the Information Desk.

**Autograph Session:**

Scheduled time slots during which writers and artists are available to sign books, fanzines or other publications for their fans. When there are others waiting for an autograph, no person may collect more than three autographs from the same person. There is no charge for most autographs, however if you wish to receive an autograph by George Takei, there will be a fee.

## Please adhere to the following rules in the exhibition venue

Nippon 2007 will be held at Pacifico Yokohama Conference Center, Exhibition hall A and Harbor Lounge.

Also the concourse between the Exhibition hall and the conference center is a public space and part of the convention venues. Please do not refrain from any action that may disturb the convention visitors.

If you are wearing a costume that exposes a lot of skin, please wear an overcoat or something to the same effect. Further it is prohibited to wear any weapons even if they are only replicas.

Japanese law applies in all public areas.

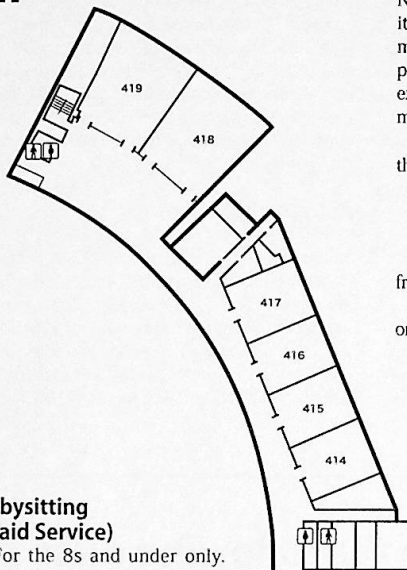
The Worldcon committee is not taking any responsibility for incidents happening outside the convention venues.

Please read the weapon policy for the convention.

Let's all have a good time on the convention!

# Nippon2007

## ConferenceCenter 4F



### Babysitting (Paid Service)

For the 8s and under only. The Babysitting Room will be run by a highly respected and experienced professional service. The Future Child Foundation has made a donation to cover babysitting on weekdays.

Free:

Thursday 11:30am ~ 6:30pm

Friday 9:30am ~ 6:30pm

Payment Required:

Saturday 9:30am ~ until 30 minutes after

the Hug Ceremony Finishes

Sunday 9:30am ~ 7:00pm

Free:

Monday 9:30am ~ 12:30pm

Reservation only, with limited places. During the main events, we expect lot of requests, so please book early.

### Child Program

The Child program room is the area that provides programs for children to enjoy at Nippon2007. In this room, we will be running items including simple workshop, games and more. We also planning to run children's programming outside this room, including an exhibition hall tour and stamp rally. Some items may require a small fee materials.

The Children's Program room will be open at the following time:

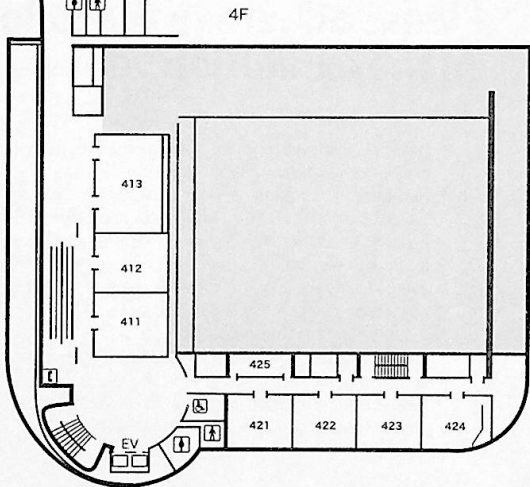
Thursday 11:30am ~ 6:30pm

Friday ~ Sunday 9:30am ~ 6:30pm

Monday 9:30am ~ 12:30pm

Our staff will ask you to remove your child from the room if it become necessary.

Please come to check on your child at least once per hour.



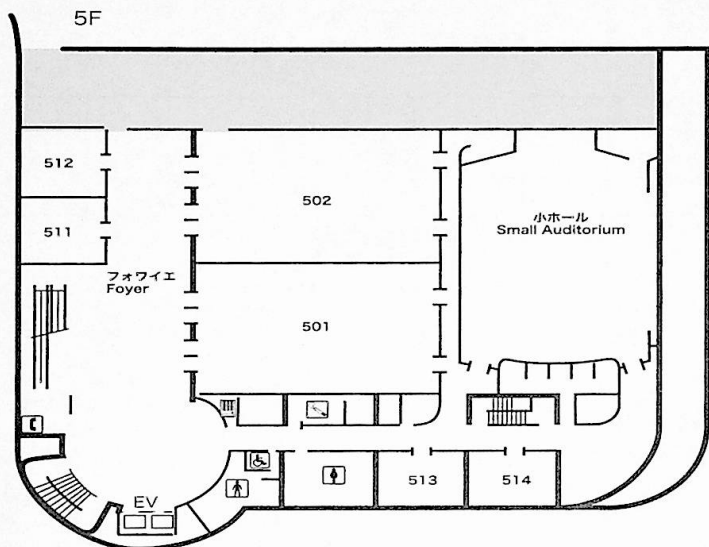
# Conference Center 5F

## Small Auditorium

### Live Concert

On Saturday, a live concert will be presented by Hiroyuki Nanba and the '87 Sense of Wonder.

On Sunday, the Daydream Music Contest and Talk Show 2007 will take place.



### First Aid

Medical personnel attending the convention will be wearing First Aid badges and can help in case of emergency.



### Interpreters

The people wearing this badge speak both Japanese and English. If you are bilingual and wish to volunteer please talk to the Volunteer Desk.





# Nippon2007

## InterContinental The Grand Yokohama 6F

### Party Schedule

	601	602	604	606	622	624	626
8/31 (金)	Seattle in 2007		Space Force 30th Anniversary Party	Kigurumi Room Party	Aussiecon's (Australia in 2010)	Kansas City in 2009	Anticipation (Montreal in 2009)
9/1 (土)	English- language Fan Videos & Norwegian Room party		Comic Market Poom party	DAICON7& amp; SF Seminar	Closed Party	Yuusya-no- Utage The 10th Anniversary tea Party	KOMA-KEN's

## RIBBON

Under the badges of some members you will find ribbons of various colors.

It is a useful tool to tell the individual functions of the members apart.

For example a red ribbon indicates a staff member or a volunteer. A rainbow colored ribbon indicates a former Guest of Honor, a former Hugo winner, a former Seiun Award winner or a former chairman.

A short introduction to various ribbons:

Committee: black text on red -

main staff of the committee

Staff: black text on orange -

committee staff members

Member Services: black text on white -

information booth staff

Rover: red text on cream -

security staff patrolling the exhibition grounds

Newsletter: black text on cream -

Newsletter staff

Internet: black text on cream -

Internet staff

Volunteers: black text on red -

kind volunteers who are helping out on the convention

Program Participant:

white text on red -

everyone who has a program on the convention

Winner: black text on yellow -

Everyone who has won one of the contests taking place during the convention

Hero: white text on blue-green -

such ribbons will be given to people who have helped us a lot during the convention.

SFWA: white text on pink -

members of the US writers association

ASFA: white text on turquoise -

members of the US artists association

Artist: orange text on yellow -

all artists participating in the Art Show

Fanzine Alley: orange text on cream -

all exhibitors of the Fanzine Alley

There are many other ribbons beyond those described above.

Please check out what other ribbons there are during the convention!

# Thursday, August 30

## Schedule & Grid

### Major Events

- 7 p.m. Opening ceremony** •  
Conference Centre 1F (Main hall)
- 8 p.m. Bid party**  
Harbor Lounge

### Kaffeklatsches E #317

- 1 p.m. - Robert Charles Wilson 113317  
2 p.m. - Charles Stross 114317  
3 p.m. - Ken Brady, Michael Whelan 115317  
4 p.m. - Pat Cadigan, Marc Zicree 116317

### Autographs 3F Foyer

- 3 p.m. - Gregory Benford, Christopher Bolton, Paul Cornell 115399  
4 p.m. - Joe Haldman, Ellen Kushner 116399

### Reading E #513

- 1 p.m. - Alma Alexander 113513  
3 p.m. - Scott Edelman 114513  
3 p.m. - Mary Turzillo 115513  
4 p.m. - Kari Maund 116513  
5 p.m. - Delia Sherman 117513

The program with the mark 'E' after the program title is an English program, with 'J' is a Japanese program, and with 'E,J' is a program that will be translated/gisted to both English and Japanese languages.

# Nippon2007

**THU Aug 30**

	301	302	303	304
10 a.m.				
11 a.m.				
noon				
1 p.m.	Registration EJ		The Future of Computers E	
2 p.m.				
3 p.m.				
4 p.m.			Evil leaders	
5 p.m.			E	

315	316	317	411	
				<b>10 a.m.</b>
				<b>11 a.m.</b>
				<b>noon</b>
		Kaffeeklatsche	William Gibson and Japan: Transpacific Feedback Loop EJ	<b>1 p.m.</b>
				<b>2 p.m.</b>
			Sexual Japan: SF/SM EJ	<b>3 p.m.</b>
				<b>4 p.m.</b>
			Re-Discovering Japan: The Unknown SF Masterpieces in Anime/Manga Masterpieces EJ	<b>5 p.m.</b>

## Nippon2007

THU Aug 30

	412	413	414	415
10 a.m.				
11 a.m.				
noon				
1 p.m.	"Yasai no yousei" / N.Y.SALAD	The Aardvark Panel  E	Right rule of Japanese hot spring  EJ	with Manga Artists of "COMIC YOUNG KING"  J
2 p.m.	J	War Crimes: A Summer in Kosovo	Alternative Family Structures	
3 p.m.		E	E	What is WSFS Business Meeting?  EJ
4 p.m.	Sapir-Whorf hypothesis	Travel as a Research Method	How to wear the Kimono  EJ	
5 p.m.	E	E	"Iai-do" Art of drawing real swords  EJ	Funny Authors and Editor of Touen/ Tsukasa pub.  J

416	417	418	419	
				10 a.m.
				11 a.m.
				noon
For Nuigurumi J	How to travel with Worldcon J	Exomusicology E		1 p.m.
	Fan Funds and What They Are E	Interstellar travel		2 p.m.
ASUS Vol.1: Association for Servant Underground Society Vol.1 J	Is This Your First Worldcon? E		E	
	Children of Haruki Murakami			4 p.m.
Press conference of Guest of Honor EJ		EJ		

# Nippon2007

**THU Aug 30**

	421	422	501	502
<b>10 a.m.</b>				
<b>11 a.m.</b>				
<b>noon</b>				
<b>1 p.m.</b>			Heroines in Anime E	
<b>2 p.m.</b>	Want to Play a Game? Teaching Other People to Play E			
<b>3 p.m.</b>			The ArchiTECHS E	
<b>4 p.m.</b>	How to Make SF More Inviting to Teens E			Film show "Ninja gari" "Kiru" EJ
<b>5 p.m.</b>				

511+512	513	514	Small Auditorium	
				10 a.m.
				11 a.m.
				noon
Underwater Farm 707 - How to induce Glacial Period J	Readings	Doki! Screenings of all P-man films  J		1 p.m.
				2 p.m.
Presents by GyaO  J		Children of Men  E		3 p.m.  4 p.m.
How to controlle the Nuclear Power  J	E	Battlestar Galactica: Downloaded  E		5 p.m.



# Nippon2007

THU Aug 30

Harbor Lounge B Aug 30 - Sep 2  
CAFE Scifi + tique

Harbor Lounge  
1 p.m. Filk E

# Friday, August 31

## Schedule & Grid

### Major Events

10 a.m. **Motion Portrait J**

Conference Centre 1F (Main hall)

6:30 p.m. **Star Trek New Voyages: World Enough and Time E, J**

Conference Centre 1F (Main hall)

### Kaffeklatsches E #317

11 a.m. - Christopher Bolton, Amy Thomson, 211317

noon - Paul Cornell, David Levine D. 213317

1 p.m. - Peter Heck, Jessica Langer, 213317

2 p.m. - Candace Jane Dorsey, 214317

3 p.m. - William Jack Bell, Nielsen Patrick Hayden, 215317

4 p.m. - James L. Cambias, 216317

5 p.m. - Gavin J. Grant, Eileen Gunn, 217317

### Autographs 3F Foyer

10 a.m. - Alma Alexander, Anne Harris, 210399

11 a.m. - Jon Courtenay Grimwood, Jean Lorrain, 211399

noon - Dave Luckett, 212399

1 p.m. - Lawrence M. Schoen, Amy Thomson, 213399

2:30 p.m. - Hiroshi Yamamoto, 214399

3 p.m. - Esther Friesner, Robin Hobb, 215399

3:30 p.m. - Baku Yumemakura, 215399

4 p.m. - Scott Edelman, Stanley Schmidt, George Takei, Fumihiko Iino, 116399

5 p.m. - Larry Niven, Robert Charles Wilson, 217399

### Reading E #513

10 a.m. - James L. Cambias, 210513

11 a.m. - Cory Doctorow, 211513

noon - Edd Vick, 212513

1 p.m. - Mark L. Van Name, 213513

2 p.m. - Charles Ardai, 214513

2 p.m. - Saori Kumi, 214317(J #316)

3 p.m. - Naomi Novik, 215513

4 p.m. - Dave Luckett, 216513

5 p.m. - Kirsten Bishop, (KJ) 217513

The program with the mark 'E' after the program title is an English program, with 'J' is a Japanese program, and with 'E,J' is a program that will be translated/gisted to both English and Japanese languages.

# Nippon2007

FRI Aug 31

FRI Aug 31

	301	302	303	304
10 a.m.	The Ethical Issues of Biotechnology	Robert Anson • Heinlein: His Impact on Us	The Henson Company: Character Building and More	Sprawl Fiction
11 a.m.	E	E	E	E
noon	Slideshow about the Mars Exploration Rovers mission.	How Healthy is the Short Story	Unexplored Alternate Histories	CSI in the 22nd Century
1 p.m.	E	E	E	E
2 p.m.	George TAKEI: Q & A	The Transparent Society	How Much Science Should SF Contain?	What Do You Read Passionately Besides SF
3 p.m.	EJ	E	E	E
4 p.m.	The Present Feature of Japanese Special Effects Heros from TV Shows	SF Manga and Anime, Japanese intelligent properties	Interview with Naomi NOVIK	Klingon: The Fast Growing Language in the Galaxy
5 p.m.	J	J	E	E



315	316	317	411		
	ASFA Business Meeting E	Kaffeeklatsche	Welcome to Yokohama!	10 a.m.	
	Conference in Chengdu, China E			EJ	11 a.m.
Basics of Book Design and Publishing E				noon	
	How to walk the way of tea - Japanese tea ceremony EJ			Earth science workshop by JAMSTEC (Japan Agency for Marine-earth Science and Technology)	1 p.m.
How to walk the way of the flower - Ikebana (2:30 - 3:30 p.m) EJ	Reading: Kumi Saori J				2 p.m.
				J	3 p.m.
(6 years (almost) and counting E	How to walk the way of tea - Japanese tea ceremony EJ		Prometheus Awards E	4 p.m.	
	Guests of Honor Official press conference E, J		Doctor Nakamatsu : Congratulations the Ig Nobel prize E	5 p.m.	

# Nippon2007

**FRI Aug 31**

**FRI Aug 31**

	<b>412</b>	<b>413</b>	<b>414</b>	<b>415</b>
<b>10 a.m.</b>	Teaching Writing E	Searching for Extra-Solar Planets	What Is Comic Market?	WSFS Business Meeting
<b>11 a.m.</b>	What Every Pro Should Know About Fandom E	EJ	J	
<b>noon</b>	History of Masquerade Costumes EJ	Remembering Robert Anton WILSON E	Crappy Games Live (Kuso games) 2007 "It's Crazy and Funny Games!" J	E
<b>1 p.m.</b>				Fannish Inquisition I The 2009 Worldcon Bids E
<b>2 p.m.</b>	Golden Guidelines for Good Game Design E	The Art of John PICACIO E	SF for the Handicapped E	Earth TV : Populer person of Paralell World J
<b>3 p.m.</b>			Pyr: Upcoming Books Slideshow E	
<b>4 p.m.</b>	The State of Cosmology EJ	The Tech Savvy Criminal E	Comic Market and SF Convention J	Godzilla 1954
<b>5 p.m.</b>				E

416	417	418	419	
Other World Fantasy and the Age of Super-Multivolume Epics  EJ	A Look Back. Kurt VONNEGUT  E	God of Entertainment Never Get Silent  J		10 a.m.
	SF 雑誌編集者からみた日中SF 気質  J		"I Can't Understand Others ~ Silent Farce by Mind Reader ~" EJ	11 a.m.
Avant-Pop Revolutions  J	Characteristics of Japanese and Chinese SF from the viewpoint of magazine editors  J	Overlooking modern Japanese SF(1): from "Godzilla" to "Japan Sinks" EJ	"Acacia" (0:30-)	noon
		Overlooking modern Japanese SF(2): SF Wonderland EJ	EJ	1 p.m.
SF translators are alive and kicking.  J	Otaku Express: from Tokyo to Moscow  J	Yaoi vs Slash  J	"Solaris" (2:30-)	2 p.m.
			EJ	3 p.m.
Fantasy and Traditional Songs and Ballads  EJ	New Wave and Speculative Fiction  EJ	Women of the future Part.I: Women of the future EJ	"Kodoku no Hoshi" (A Solitary Planet)  EJ	4 p.m.
		Women of the future Part. II: Introducing the Tiptree Award and the Sense of Gender Award J		5 p.m.

# Nippon2007

FRI Aug 31

FRI Aug 31

	421	422	501	502
10 a.m.	Sobicegh mini	Talk about Folklore in Japan J	Memorial Panel Discussion: 40 Years of SFWJ	
11 a.m.	J	Surprised! Scientific Experiment. "a needle bed" J	J	SF Vaudeville 2007 - Atomic Monster Ganilla - EJ
noon	Tea party with Haruka Takachino J	SF Classroom for Kids	Tezuka was born	
1 p.m.	The Hospital of the Future E	J	EJ	SF Vaudeville 2007 - Atomic Monster Ganilla - Ej
2 p.m.	Yuusha-no Ochakai(Hero's Tea Party) in Nippon2007	Moebius, Kline, and RP-2; see the space beyond the fourth dimension	Seikai no Densetsu(The legend of the discovery of the galaxy)	SF Rakugo <Theater Sui-Fish>, Presented by Baku Yumemakura
3 p.m.	J	EJ	J	J
4 p.m.	Make a Japanese Sword!	Remix Contents Festival	Dirty Pair no Daihakai	SF Vaudeville 2007 - Atomic Monster Ganilla - EJ
5 p.m.	EJ	J	J	Opening Animation Panel Discussion J

511+512	513	514	Small Auditorium	
Is This Your First Worldcon? (Japanese) EJ	Readings	Pan's Labyrinth		<b>10 a.m.</b>
		E	Hugo Discussion Group E	<b>11 a.m.</b>
Digital Maoism: Drowning the Individual Voice E		Doctor Who: Army of Ghost and Doomsday E	Guest of Honor David BRIN E	<b>noon</b>
				<b>1 p.m.</b>
Screenings largish in our way for Denki-neko plus J		The Prestige E		<b>2 p.m.</b>
			<b>3 p.m.</b>	
Writing Non-Human Characters E	E	Doctor Who: Girl in the Fireplace E	The Chesley Awards E	<b>4 p.m.</b>
				<b>5 p.m.</b>

**FRI Aug 31**



# Nippon2007

**FRI Aug 31**

**Harbor Lounge A Aug 31 - Sep 2**  
Games

**Harbor Lounge B Aug 30 - Sep 2**  
CAFE Scifi + tique

**1F Foyer**  
noon - Ningen senkan game E, J

**Harbor Lounge**  
noon - Filk E

**Art Show**  
noon - Painting demonstration E, J

**FRI  
Aug 31**

# Saturday, September 1

## Schedule & Grid

### Major Events

**5 p.m. BANDAI VISUAL Preview Videos J**

Conference Centre 1F (Main hall)

**6 p.m. Hugo Awards Ceremony E, J**

Conference Centre 1F (Main hall)

### Kaffe klatsches E #317

10 a.m. - David Brin, Jay Lake, Ellen Datlow, 310317

11 a.m. - Lawrence M. Schoen, Lou Anders, 311317

noon - Jon Courtenay Grimwood, William Shunn, 312317

1 p.m. - Kirsten Bishop, (KJ), Inge Heter, 313317

2 p.m. - Michael Whelan, Charles Ardai, 314317

3 p.m. - Ellen Kushner, 315317

4 p.m. - Stanley Schmidt, Michele Ellington, 316317

### Autographs 3F Foyer

11 a.m. - Pat Cadigan, G. David Nordley, 311399

noon - Geoffrey A. Landis, 312399

12:30 p.m. - Norihiko Asao, 312399

1 p.m. - Michael Whelan, Lou Anders, 313399

1 p.m. - George Takei, 313998 (Hall)

3 p.m. - Naomi Novik, Delia Sherman, 315399

16:30 p.m. - Yusaku Kitano, 316399

5 p.m. - Grania Davis, Charles Ardai, 317399

### Reading E #513

10 a.m. - Geoffrey A. Landis, 310513

11 a.m. - Jay Lake, 311513

noon - Ellen Kushner, 312513

1 p.m. - Esther Friesner, 313513

2 p.m. - Lawrence M. Schoen, 314513

2 p.m. - Sakyo Komatsu, 314416(J #416)

3 p.m. - Candas Jane Dorsey, 315513

3 p.m. - Yusaku Kitano, 315416(J #416)

4 p.m. - Eileen Gunn, 316513

4 p.m. - Eiichiro Saito, 316412(J #412)

5 p.m. - G. David Nordley, 317513

5 p.m. - Masaya Fujita, 317412(J #412)

The program with the mark 'E' after the program title is an English program, with 'J' is a Japanese program, and with 'E,J' is a program that will be translated/gisted to both English and Japanese languages.

# Nippon2007

## SAT Sep 1

	301	302	303	304
<b>10 a.m.</b>	Future of Japan Special Effects  J	Sayonara Jupiter Remake Promoting Committee  EJ	Is Science Fiction Necessary?  E	The Inevitable Google Panel  E
<b>11 a.m.</b>				
<b>noon</b>	Talk with Tooru Hirayama "Super Heros created by Shotaro Ishinomori"  J	Front Line of Science and SF, to the Future!	The Future of War	Mundane or Transcendent?  E
<b>1 p.m.</b>			E	
<b>2 p.m.</b>			The Affinity between Japanese Science Fiction and Screen Image / "Danwashitsu Oyakata" Special	
<b>3 p.m.</b>	J		EJ	E
<b>4 p.m.</b>	Anime Symposium TOKUMA SHOTEN Presents : Talk about "COIL A CIRCLE OF CHILDREN"  J	EJ	SUGOI KAGAKU de mamorimasu! (Guard you with astonishing science!) --- SF Prospect of Toei Super Sentai	Sex and Technology  E
<b>5 p.m.</b>			J	

315	316	317	411	
How to travel with Worldcon J	SFWA Business Meeting	Kaffeeklatsche	Do fans read faster? A Speed-Reading Workshop E	<b>10 a.m.</b>
	E		Welcome to the Fantastic World of Juvenile SF EJ	<b>11 a.m.</b>
Japan SF Librarian Association 9th Annual Meeting J	Location, Location, Location: How Setting Influences and Structures the Story E		SF Military Explained	<b>noon</b>
Upcoming Del Rey Titles E			J	<b>1 p.m.</b>
SF Tribes? The New Communities in Internet Society. E	"Let's interact through SF illustrations!" The almost bilingual session. E,J		Military in SF? How real is Moonlight Mile?	<b>2 p.m.</b>
	General Meeting of the Federation of the Science Fiction Fan Groups of Japan		J	<b>3 p.m.</b>
			The ArchiTECHS (David Brin's TV Shows)	<b>4 p.m.</b>
	J		EJ	<b>5 p.m.</b>

# Nippon2007

## SAT Sep 1

	412	413	414	415
<b>10 a.m.</b>	Middle Earth - advanced civil service exam 2007	What Editors Want From Artists	Comic Market and the Otaku Industry	WSFS Business Meeting
<b>11 a.m.</b>	EJ	E	J	
<b>noon</b>	David Brin reading with origami play	The Books Ate My House E	Meet the John W. Campbell Award for Best New Writer Finalists	E
<b>1 p.m.</b>	EJ	Heroes: The TV Series E	E	About translations of Tolkien's works in Japan J
<b>2 p.m.</b>	Perry Rhodan Summer Lecture 2007 J	Religion In SF	Comic Market = SF	Making Writing More Vivid and Memorable
<b>3 p.m.</b>	Go worldcon with train EJ	E	J	E
<b>4 p.m.</b>	Reading: Saito Eiichiro J	Thomas the Rhymer	Moe Stocks guide to the world	Religion in Fantasy
<b>5 p.m.</b>	Reading: Fujita Masaya J	E	J	E

416	417	418	419	
Multiple SF: Bridge between Japan and US	Goth in Science Fiction J	Talk with Mr. Benford J	"Solaris"	10 a.m.
EJ	Somewhere between Literature and CosPlay Vol.3 J	What kind of man has Hoshi Shin'ichi been? J	EJ	11 a.m.
We Love Cyberpunk!	SF Studies and SF Education	Panel Dialogue: Amano Yoshitaka vs. Bob Eggleton	"Kodoku no Hoshi" (A Solitary Planet)	noon
J	J	J	EJ	1 p.m.
Reading: Komatsu Sakyo	SF Studies and SF Education EJ	Otaku Studies		2 p.m.
Reading: Kitano Yusaku	What's going on in German SF now? J	J	"I Can't Understand Others ~ Silent Farce by Mind Reader ~" EJ	3 p.m.
Is It Really Strange?: New Slipstream	The World of Queer SF Books	Between "bar baraikai" and "Poh no Ichizoku": for the faraway dream of immortality	"Acacia"	4 p.m.
EJ	J	J	EJ	5 p.m.

# Nippon2007

## SAT Sep 1

	421	422	501	502
<b>10 a.m.</b>	Surgeant Keroro, is he a excellent leader? His operations are working well, may be.		Yoshitaka Amano talk with Nozomi Omori	Research 101
<b>11 a.m.</b>	J		EJ	E
<b>noon</b>	The Death of Individual Innovation		Why do Boys Make Flying Machines?	Women of Japan Panel discussion
<b>1 p.m.</b>	E		J	E
<b>2 p.m.</b>	RED DWARF Sleeping Quarters	Amazing science lab. Let's make the Slime! J	What is Guin Saga about?	Film show "Ninja gari" "Kuru" 2
<b>3 p.m.</b>	J		J	
<b>4 p.m.</b>	Star Trek New Voyages: World Enough and Time EJ	Let's play the Theremin! J	The Universe as seen from the Hubble Space Telescope	
<b>5 p.m.</b>			EJ	EJ

511+512	513	514	Small Auditorium	
What is Heinlein given for Science Fiction	Readings	A Scanner Darkly		10 a.m.
J		E		11 a.m.
Class-Based Societies in F&SF		Doctor Who: School Reunion		noon
E		E		
Alten Sexuality		V for Vendetta		1 p.m.
E		E	Hiroyuki Nanba & '87 Sense of Wonder Live	2 p.m.
Levels and Limits of Metafictionality		Stargate SG-1: 200		3 p.m.
E	E	J	4 p.m.	
	E	Precedence showing "BLUE DROP - Tenshi tachino gikyoku."		5 p.m.
		J		

**SAT Sep 1**



# Nippon2007

## SAT Sep 1

**Harbor Lounge A** Aug 31 - Sep 2  
Games

**Harbor Lounge B** Aug 30 - Sep 2  
CAFE Scifi + tique

**Exhibition Hall A 1F**  
4 p.m. - Women of Japan Exhibit Artists Talk (Docent) E

SAT Sep 1

# Sunday, September 2

## Schedule & Grid

### Major Events

noon 38th Seiun Award Ceremony E, J

3 p.m. Masquerade E, J

### Kaffe klatsches E #317

10 a.m. - Cory Doctorow, Geoffrey A. Landis, 410317

11 a.m. - Scott Edelman, 411317

noon - Joe Haldeman, Robin Hobb, 412317

1 p.m. - Esther Friesner, G. David Nordley, 413317

2 p.m. - David Brin, Gregory Benford, 414317

3 p.m. - Grania Davis, 415317

4 p.m. - Alma Alexander, Delia Sherman, 416317

5 p.m. - Anne Harris, 417317

### Autographs 3F Foyer

11 a.m. - Robert Silverberg, John Picacio, 411399

noon - Ellen Datlow, Charles Stross, Eileen Gunn, 412399

1 p.m. - David Brin, Marc Zicree,

Candas Jane Dorsey, Yoshiki Tanak, 413399

2 p.m. - Bob Eggleton, Lillian Csernica, Shinji Kajio, 414399

### Reading E #513

10 a.m. - Robert Charles Wilson, 410513

11 a.m. - Jon Courtenay Grimwood, 411513

11 a.m. - Shinji Kajio, 411411 (J #411)

noon - Marc Zicree, 412513

1 p.m. - Joe Haldeman, 413513

2 p.m. - Amy Thomson, 414513

4 p.m. - Paul Cornell, 416513

5 p.m. - Charles Stross, 417513

The program with the mark 'E' after the program title is an English program, with 'J' is a Japanese program, and with 'E,J' is a program that will be translated/gisted to both English and Japanese languages.

# Nippon2007

SUN Sep 2

	301	302	303	304
10:00	Visual Pleasure of Japanese SFX: Images begin to talk SF	Guest of Honor David BRIN (translated)	30th Anniversary Chronicles of Star Wars J	Longer life expectancy = more time to be miserable?
11:00	J	EJ	Upcoming from Baen Books E	E
12:00	TVFantastic	Talk about difference of animation and live-action film, "Shin Onna tachigui retsuden"	The Art of Michael WHELAN	Defending Public Domain from Corporate Copyright Maximalism
13:00	J	J		E
14:00	Why does monster appear? -chronicle of monsters and human-beings-	Tales From Earthsea - Universe of Scenic Art J	E	Free Will? Or Neurochemistry?
15:00	J	"Rocket girls"		E
16:00	Anime Symposium TOKUMA SHOTEN Presents : The Interesting Feature of Mechanical Design an Film Direction		Living with Another Writer E	Origami Design J
17:00	J	EJ	Miss Piggy and Godzilla E	

SUN Sep 2

315	316	317	411	
ANIME	Was Margaret Mead Full of S***?	Kaffeeklatsche	History of Japanese SF Fandom	<b>10:00</b>
			J	
			Reading: KAJIO Shinji	<b>11:00</b>
	E		J	
			DiscWorld 101	<b>12:00</b>
			EJ	
				<b>13:00</b>
			Upcoming Books from Tor	<b>14:00</b>
			E	
	Ted Chiang Interviewed	<b>15:00</b>		
	EJ			
	Second Life and Other Virtual Worlds	<b>16:00</b>		
		<b>17:00</b>		
J			EJ	

# Nippon2007

SUN Sep 2

	412	413	414	415
10 a.m.	Writing for TV	The Economics and Sociology of Abundance	Comic Market's Cultural Value	WSFS Business Meeting
11 a.m.	E	E	J	
noon	Celtic and British Influenced SF and Fantasy	Future Art: What New Forms of Art might Arise from Current Technologies or Esthetics?	Creating an SF Franchise	E
1 p.m.	E	E	E	The Golden Duck Awards for Excellence in Children's Science Fiction E
2 p.m.	The Bookstore Panel No. 5 J	A "Survey of Readers"	The Legends of Comic Market	
3 p.m.		E		J
4 p.m.	Why FTL is Time Travel	Anti-Americanism	Science Fiction Museum - A Virtual Tour	
5 p.m.	E	E	E	

SUN Sep 2

416	417	418	419	
Cyberpunk Future and / or Geetstate  J	Asian SF and its surroundings: Today's Situations  J	Pleasure of Hardcore SF  J	"Kodoku no Hoshi" (A Solitary Planet)  EJ	10 a.m.
				11 a.m.
Cyberpunk Seen from Outside  EJ	Fantasy and Horror Fiction  J	Interstitial Arts Foundation  E	"Acacia"  EJ	noon
				1 p.m.
SF and our Classics  J	Educating SF Creation  J	All Works of Tanaka Yoshiki  J	"Solaris"  EJ	2 p.m.
				3 p.m.
Gibo Gibo 90 Minutes  J	Literary Translation in Modern Japan and Europe  J	Common Denominator of Horror: Evolution and Diffusion of Japanese Horror  J	"I Can't Understand Others ~ Silent Farce by Mind Reader ~"  EJ	4 p.m.
				5 p.m.

# Nippon2007

SUN Sep 2

	421	422	501	502
<b>10 a.m.</b>	Small Press Publishing in the United States, Japan, Europe ...  E	A Look Back: Jack WILLIAMSON  E	Is Fantasy Necessary?  E	Inhibited film! Minoru Kawarazaki talk about "Nippon igai zenbu chinbotsu"  J
<b>11 a.m.</b>		Movement of solar system  EJ		
<b>noon</b>	The Drawing Board Theoretical Society  J		Godzilla 2007	Design a Truly Alien Alien
<b>1 p.m.</b>		PlaceEngine: A Location Estimation Platform based on Wi-Fi signals  J	EJ	E
<b>2 p.m.</b>		Surprised! Scientific Experiment.  J	Video Games Have Changed Japanese CG  J	The Integration of Science and Religion in SF&F  E
<b>3 p.m.</b>	SF Writing Workshop			
<b>4 p.m.</b>		Experiment Orbit of Planet  EJ	Let's Dance Hare-hare-yukai!	Tesla-Gernsback Continuum
<b>5 p.m.</b>	J		EJ	EJ

511+512	513	514	Small Auditorium		
Gibberish  E	Readings	Short Presentation Winner  E	Alternate Futures  E	10 a.m.	
				11 a.m.	
Secrets of Athlete Humanoid "MANOI"  J		Long Presentation Winner  E		noon	
				1 p.m.	
				2 p.m.	
The Short Story's Role in Fantastic Fiction  E				Fantastic Music Show 2007 -- Akira Kushida sings Chumei Watanabe, mini live & talk show	3 p.m.
Lost Tribes of Cult novels  E					
	5 p.m.				

SUN Sep 2



# Nippon2007

**SUN Sep 2**

**Harbor Lounge A Aug 31 - Sep 2**

Games

**Harbor Lounge B Aug 30 - Sep 2**

CAFE Scifi + tique

**1F Foyer**

10 a.m. - Shotokan Karate-do Workshop E

**Harbor Lounge**

10 a.m. - Filk E

**1F Foyer**

noon - Qigong training (SF Fantasy Alpain Club) E, J

**Exhibition Hall A 1F**

noon - Women of Japan Exhibit Artists Talk (Docent)

**SUN Sep 2**

# Monday, September 3

## Schedule & Grid

### Major Events

noon Cosing Ceremony E, J  
Main hall

### Kaffe klatsches E #317

10 a.m. - Larry Niven, Mary Turzillo, 510317

11 a.m. - Stephen Segal, 511317

### Reading E #513

10 a.m. - Grant Carrington, 510513

The program with the mark 'E' after the program title is an English program, with 'J' is a Japanese program, and with 'E,J' is a program that will be translated/gisted to both English and Japanese languages.

# Nippon2007

**MON Sep 3**

	301	302	316	317
<b>10 a.m.</b>	The History of _Your_ World		Readings	Kaffeeklatsche
<b>11 a.m.</b>	E	Exploring Mars: The Inside Story E	E	

	411	412	413	414
<b>10 a.m.</b>	Blogging and Live Journals in SF	Visiting Japan 2	The Singularity: How to Write About It	Mysteries: Cross-Over, Overlaps and Marketing
<b>11 a.m.</b>	E	E	E	E

	416	417	418	419
<b>10 a.m.</b>	Video game "Senjo no Kizuna" meeting J		Denvention and the 2009 Worldcon E	Masquerade Postmortem EJ
<b>11 a.m.</b>		The Zygote Panel E	Fannish Inquisition II: Post 2009 bids E	

**MON Sep 3**

# PROGRAMS

## About Program Numbers

The 1st number: the Date, 1=8/30 2=8/31 3=9/1 4=9/2 5=9/3

The 2nd & 3rd number: the starting hour by 24hrs system

The 4 - 6th number: the room number

\*Exception;

198 Main Hall

199 1F Foyer

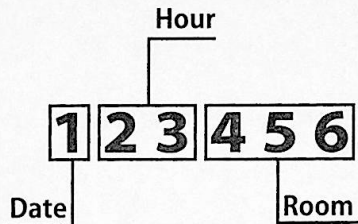
399 3F Foyer

599 Small Auditorium

798 Harbor Lounge

996 Exhibition

997 Art show



## 30-Aug

1 p.m.

**113199 - The room of model railways. J**

**113303 - The Future of Computers E**

Computers are getting lighter and more capable every year. (The latest innovation: tie two or more onto the same piece of silicon). Is there an end in

sight? Or does it only end at some point in the so called "Singularity?"

Chris COOPER ,David D. LEVINE ,Jack William BELL ,Mark L. VAN NAME.

**113411- William Gibson and Japan: Transpacific Feedback Loop J**

Also we discuss this innovative writing and vision came back to Japan and stimulated Japanese cyberpunk imagination and analyze this transpacific "feedback loop" in the context of globalization.

Koutaro Nkagaki,CJ (Shige) Suzuki.

# Nippon2007

## 113412 - "Yasai no yousei"/ N.Y.SALAD J

Film show of animation made by NHK, "Yasai no yousei"/N.Y.SALAD there are characters created by GOH Yoshitaka Amano.

## 113501 - Heroines in Anime E

Some people claim that there are no heroines in Anime; that the females are simply eye candy or in need of rescuing. Is this true? Or are female Anime heroes capable of kicking ass on an equal footing with the males?

Lillian CSERNICA ,Rene WALLING ,Terry O'BRIEN.

## 113413 - The Aardvark Panel E

The first panel of the convention. We talk about aardvarks or whatever other fancy comes to mind.

Jessica LANGER ,Paul CORNELL ,Susan DE GUARDIOLA John HERTZ.

## 113414 - Right rule of Japanese hot spring EJ

Do you know how to use Japanese hot spa? Do you know potency of hot spring water? "Manyo Club" send person to talk about Japanese hot spa. You, Japanese might be good to hear this program.

## 113415 - with Manga Artists of YOUNG KING J

Young King family from Shonen Gahou (Boys Pictorial magazine) has more unique SF authors. Their editor, who loves to play, will come to visit bringing a few manga authors with him.

Masahiro Ohno Masaru Ohishi,Umetaro Saitani.

## 113416 - For Nuigurumi J

Stuffed toys, plush Animals, rag dolls, whatever it calls - and its lover. Let's chat and touch each other, as you like. In the program we've taken photograph for ten years to make "Nuigurumi Who's Who."

## 113417 - How to travel with Worldcon J

Site selection, ribbons, kaffeeklatsche, filk, Party etc. there are many equipments and systems these are different from national convention. Here are guides for your wandering on worldcon.

## 113418 - Exomusicology E

Science fiction has been creating alien cultures for decades, but we rarely think about alien music. Where are there descriptions of alien music in the genre? What might truly alien music sound like? Would we like it? Would we even recognize it?

Dave HOWELL John T. SAPIENZA Jr. ,Peter HECK.

## 113511- Underwater Farm 707 - How to induce Glacial Period J

"Last year's theme was ""How to sink Japanese islands"".

This year's theme is how to induce Glacial Period artificially.

This is very difficult challenge without depending on solar change or volcanic activity in the earth warming situation."

Hajime Nishimura

## 113514 - Doki! Screenings of all P-man films J

"P-man" is a hero of special effects heroic action films. The films are based on a story written by an elementary-school-age child, and composed of 5-minute episodes that feature jumbly mixed high-tech and low-tech special effects.

Takemasa NOMURA

## 113798 Filk E

2 p.m.

## 114413 - War Crimes: A Summer in Kosovo E

Darfur. Bosnia. Kosovo. Rwanda. Can there be justice? Can these crimes be prevented? Learn about the graves of Kosovo, and the ensuing court case. The forensic team in Kosovo (summer 2000) was the largest and most professional ever assembled to work on war crimes. What's next, and where?

Patricia MACEWEN.

### 114414 - Alternative Family Structures E

A discussion on how the family has changed over the ages, and how this can be integral to the art of storytelling.

Margene BAHM ,Jessica LANGER ,Farah MENDLESOHN.

### 114417 - Fan Funds and What They Are E

For fifty years we've had Fan Funds that carry people across the seas to visit other fans.? Two special one-time funds were made for Nippon 2007, bringing John from the U.S. and Chris from Britain.? Ask them questions!?! Hear their stories! John HERTZ .Chris O'SHEA.

### 114418 - Interstellar travel E

A slide presentation on interstellar travel.

G. David NORDLEY.

### 114421- Want to Play a Game? Teaching Other People to Play E

"How many times have you flipped through the rule book, trying to find answers while others wonder ""can we just start playing already?"" Learn what not to tell people, why the rulebook's are bad and other ways of assuring that you're not ruining a good game with a bad explanation. James L. CAMBIAS ,Michele ELLINGTON ,Terry O'BRIEN.

3 p.m.

### 1115411- Sexual Japan: SF/SM EJ

"Although some of them seem unordinary and even bizarre, they successfully provide interesting insights of Japanese culture and imagination throughout the modern and postwar history of Japanese society.This panel partially includes some material which may not be suitable for children."

Koutaro Nkagaki,CJ (Shige) Suzuki.

### 115415 - What is WSFS Business Meeting? EJ

The Worldcon business meeting can be intimidating for newcomers. The panels provides an introduction to why the business meeting is important and how it works. We'll also talk about some of the topics that will be covered at the meeting.

Kevin STANDLEE.

### 115416- ASUS Vol.1: Association for Servant Underground Society Vol.1 J

"This is trial session of person who work for civil service to talk about SF&F.

There is place for party and meeting with civil service persons love SF&F."

Yasuyosshi Wada,Kouichi Oohashi,Takumi Shibano,Yukinori Toshinami,Ken Yamaoka.

### 115417 - Is This Your First Worldcon? E

What everyone should know about about Worldcons.

Gay HALDEMAN ,Martin EASTERBROOK ,Perianne LURIE.

### 115501- The ArchiTECHS E

Take a bunch of geniuses, give them a problem and 48 hours to solve it, then let the cameras roll to watch it happen. Two pilot episodes of this series aired on USA's History Channel. With an

# Nippon2007

introduction by GOH David Brin.  
David BRIN.

## 115514 Children of Men E

Film for Hugo Nominees

4 p.m.

## 116303 - Evil leaders E

Evil leaders in history and literature are fascinating. What makes them evil, and why do they interest us? What is evil? Can an evil leader benefit his people? Does writing about evil help us understand the reality? Should a writer feel obligated to say something profound, or just have fun?

Dave LUCKETT ,David D. LEVINE ,Esther FRIESNER.

## 116412 - Sapir-Whorf hypothesis E

In the early 20th century, Sapir and Whorf hypothesized the nature of a particular language influences the thought patterns of its speakers. This concept is pervasive in western thought. Has research proven or disproven this, and is the concept a useful tool or a dead end?

Geoffrey A. LANDIS ,Jean LORRAH ,Lawrence M. SCHOEN.

## 116413 - Travel as a Research Method E

So here you are in Japan; can you use the trip to stimulate your work? What are the ups and downs of tourism-as-research? What do you miss? What does it add?

Amy THOMSON ,Jon COURTENAY GRIMWOOD ,Peter HECK.

## 116414 - How to wear the Kimono E

"Instructor who is came from ""Maimu"" will teach how to wear the Kimono well.

This program apply with English, present for person came from out of Japan."

Teacher of dressing,Flick CHRISTIAN,Inge HEYER.

116417 - Children of Haruki Murakami EJ

"Introducing the slipstream writers in the tradition of Haruki Murakami in Japan.

Nozomi Omori ,Yoshio Kobayashi.

## 116421- How to Make SF More Inviting to Teens E

SF attracts tons of teens via video games, movies, anime, and comics but how do we get them to read books? Should we port books to cell phones? Perhaps if we add more sex, disrespect for authority, hip bildungsromans, and work with media tie-ins?

Cory DOCTOROW ,David M. SILVER ,Farah MENDLESOHN ,Lisa C. FREITAG ,Patrick NIELSEN HAYDEN.

## 116502 Film show "Ninja gari" "Kiru" EJ

Samurai fantasy play on screen. It is masterwork of Tetsuya Yamauchi. Let's fun masterpiece of samurai drama with English caption.

Aki Nakata

5 p.m.

## 117411- Re-Discovering Japan: The Unknown SF Masterpieces in Anime/Manga Masterpieces EJ

Many Japanese SF anime and manga masterpieces are still unknown to the foreign audience. In this panel, we'd like to introduce some of these by using a great numbers of visual images and clips. Koutaro Nkagaki,CJ (Shige) Suzuki.

## 117414 - "Iai-do" Art of drawing real swords EJ

"Iai-do" is one of accomplishment of "Bushu". And it is including "Zen" thought. The person play military exercise with inner spirit, and please see

with your spirit. Feel civilization of Japan  
Mitsuhiro Yokota

### 117415 - Funny Authors and Editor of Touen/Tsukasa pub. J

From this group advancing on the subculture  
course of their own, Rui Tsuji, an attractively weird  
editor working for the Touen/Tsukasa Shobou  
group, and merry writers working with Rui come  
to the SF convention!

Raymond Hooter Rui Tsuji

### 117416 - Guests of Honor Official press conference EJ

This program present for all media person's to  
interview

David Brin Takumi Shibano Sakyo  
Komatsu Yoshitaka Amario Medical  
Wealan Hiroaki Inoue

### 117514 - Battlestar Galactica: Downloaded E

Film for Hugo Nommees

7 p.m.

### 119198 - Opening ceremonies EJ

8 p.m.

### 120797 - Bids Party E



# Nippon2007

31-Aug

10 a.m.

FRI  
Aug 31

## 210198 - Motion Portrait J

Motion Portrait extracts features from a facial photo taken from the front, then automatically generates a three dimensional facial model at a high speed. Real time animation with natural facial expressions such as blinking can be created by using the Expression Engine to control these models.

Junichi Fujita

## 210301 - The Ethical Issues of Biotechnology E

Who own genes? Can you hide your genetic flaws? Should you tailor your kids for appearance? Should androids have human rights? Should we seed the galaxy with Earth plants? Which will destroy civilization: clone wars or genetically modified food crops? How are these issues handled, mishandled, or neglected by SF? Carolina GOMEZ LAGERLOF ,Elisabeth MALARTRE ,Gregory BENFORD ,Robert SILVERBERG.

## 210302 - Robert Anson Heinlein: His Impact on Us E

Robert A. Heinlein was the most influential writer in SF, but which Heinlein? The author of: short works that set a new standard for SF, Heinlein Juveniles, or the longer, lesser, later works. What is Heinlein's legacy? Where was he influential and who did he influence?

David M. SILVER ,G. David NORDLEY ,Kari MAUND ,Keith G. KATO ,Farah MENDLESOHN.

## 210303 - The Henson Company: Character Building and More E

Find out what's hot at the Henson company, and what drives them towards the projects they pursue. Presented by VP Halle Stanford, and brought to life by puppeteer Julianne Buescher

Halle STANFORD ,Julianne BUESCHER ,Rachel Brown.

## 210304 - Sprawl Fiction E

"Sprawl fiction" was coined to show how new writers, most in their thirties, are trying to expand our genre yet still loving its very core, straight SF. Terms like "new Weird", "interstitial", "strange fiction" or "new fabulist" don't cover the trend fully. It is a natural reflection of our urban society and probably heralds the new stage of our evolution; to the stars. We talk about why the new generation slipstream is not the fusion of literary fiction and SF/F.

Ellen DATLOW ,Gavin J. GRANT ,Lou ANDERS ,Yoshio KOBAYASHI.

## 210316 - ASFA Business Meeting E

Business meeting of members of The Association of Science Fiction & Fantasy Artists (ASFA). ASFA Members.

## 210411 - Welcome to Yokohama! EJ

This program introduce for person came from many countries to know the places of interest in Yokohama. Please go on a walkabout in Yokohama.

## 210412 - Teaching Writing E

Ellen KUSHNER ,Scott EDELMAN ,Gay HALDEMAN.

## 210413 - Searching for Extra-Solar Planets EJ

Inge HEYER.

## 210414 - What Is Comic Market? J

I think that Comic Market can not be explained simply to anyone who hasn't experienced it in person. This panel will give an overall introduction of Comic Market.

Naoki Satomi.

**210415 - WSFS Business Meeting E**

Every member of Nippon 2007 is a member of the World Science Fiction Society (WSFS), and is eligible to attend and vote at the Society's Business Meetings. The agenda for the main meeting will be set at today's meeting. Exercise your rights as a member.

Kevin STANDLEE ,Pat McMURRAY ,Don EASTLAKE III.

**210416 - Other World Fantasy and the Age of Super-Multivolume Epics EJ**

We invite fantasy writer from oversea such as Mr. Robin Hobb as known as "Farseer" series popular in Japan and Mr. Ellen Kushner as known as "Thomas the Rhymer" and Japanese fantasy writer close up to today's American fantasy world.

Ellen Kushner, Robin Hobb, Sami Shinosaki, Reiko Hikawa, Mishio Fukazawa, Yufuko Senowo

**210417 - A Look Back: Kurt VONNEGUT E**

A look back at the life and works of Kurt Vonnegut.

Allen BATSON ,Eileen GUNN ,Mary TURZILLO.

**210418 - God of Entertainment Never Get Silent J**

The traditional arts which was handed over from long ago in the SF world? silly conversation. What is Thunderbirds in • • version? If XX become 3000 people? If you sing J. G. Ballard? If you put a lyric to the theme song of that movie? talk and talk about parody of SF novels, movie, cartoon, special effects ! You may be forced to join us?

Hiroshi Yamamoto.

**210421 - Sobicegh mini J**

A tea with Morioka-sensei. Let's deepen the bonds of friendship over snacks and drinks from Star World Crests and Star World Battle Flags.

Hiroyuki Morioka.

**210422 - Chilling Story Is Told J**

This is a serious lecture about "Urban Myth" in Japan. The more seriously you know, the more interesting a deep world of "Urban Myth" becomes. Let's navigate through the world of "Urban Myth" together.

Reisa SHITO, Ayumi HATTORI

**210501 - Memorial Panel Discussion: 40 Years of SFWJ J**

In June 2007 a magazine was published to celebrate the 40th anniversary of the foundation of the SF Writer's Club. It contains a review of the Club's activities from its founding until the present. The panel will discuss the circumstances around the events forty years ago and bring back lots of old memories. We will also discuss the meaning of the SF grand prize and the SF newcomer prize.

Tadashi Kosai, Koji Tanaka, Sakyō Komatsu, Masaki Yamada, Koshu Tani, Tsukasa Tohno.

**210511 - Is This Your First Worldcon? (Japanese) EJ**

What everyone should know about about Worldcons. This session will emphasize knowledge for first timers from Asia.

Amy THOMSON ,Marah SEARLE-KOVACEVIC, Joe SICLARI.

**210514 - Pan's Labyrinth E**

Film for

11 a.m.

**211316 - Conference in Chengdu, China E**

A talk about the conference in Chengdu, China.

Adam RAKUNAS Jason STODDARD ,Ken BRADY.

**211412- What Every Pro Should Know About Fandom E**

Without fandom, there would be no Worldcon

# Nippon2007

and no Hugo Awards. Once you immerse yourself in fandom there are definite do's and don'ts. Find out what they are from people who know.  
Gay HALDEMAN ,Lillian CSERNICA ,Patrick NIELSEN HAYDEN ,Susan DE GUARDIOLA.

## 211417- Characteristics of Japanese and Chinese SF from the viewpoint of magazine editors J

We are inviting SF magazine editors from Japan and China to talk about SF in Japan and China from an editor's point of view.

Li Qin,Haijun Yao,Yoshihiro Shiozawa,Shuuichi Oono,Hisayuki Hayashi

## 211419 -"I Can't Understand Others ~ Silent Farce by Mind Reader ~ "EJ

Hakoniwa-Enbukyoku

## 211422-Surprised! Scientific Experiment. "a needle bed" E

While experiencing chemical experiment, become familiar in science education and Let's enjoy the feeling of SF.The pessurre make every phenomenon. In the globe surface be given big pessurre by the atmosphere.We show's the press and other pression make everyone things.Why do you know indian an ascetic sit on a needle bed? We have needle bed and show it easy sleep on needle bed.

Tomoki AOYAMA,Nobuo SUMIYOSHI,Daisuke KUSAYANAGI

## 211502 - SF Vaudeville 2007 - Atomic Monster Ganilla -1 EJ

Nanko Kyokudo , a new wave traditional storyteller from Kansai, revives the picture-story show, which has been a great media of Japan to the new century.

The Atomic Monster Ganilla, a creation by Shichima Sakai, the artist who had great influence to Japanese manga genre, rampages at the North Sea!! Could human being stop Ganilla?"

Nanko KYOKUDO, Taku ASHIBE.

## 211599 - Hugo Discussion Group E

The Hugos are Saturday; our panelists discuss what they think of everyone else's work but their own...

Vincent DOCHERTY, Mike SCOTT ,Perriane LURIE.

noon

## 212199 - Ningen senkan game EJ

This game is actual fighting game human who is blindfolded. Blindfolded person that is assumed to butle ship move and fight as commander's request. Commander have the game in his hands. Or is it made by roll of the dice?

## 212301- Slideshow about the Mars Exploration Rovers mission. E

Geoffrey A. LANDIS.

## 212302 - How Healthy is the Short Story E

For decades, there has been talk of the death of short fiction in science fiction, fantasy, and horror. Are markets shrinking? Is the quality less than it was thirty years ago?

Ellen DATLOW ,Gavin J. GRANT Joe HALDEMAN ,Larry NIVEN .

## 212303 - Unexplored Alternate Histories E

What makes for a good alternate history? Are WWII, Rome, and the US Civil wars all overused? Are there other overlooked but interesting possibilities? If so, why aren't they being used?

Alma ALEXANDER ,Ben YALOW ,Linda ROBINETT ,Robert Charles WILSON ,Edward JAMES.

**212304 - CSI in the 22nd Century E**

How real is CSI? A lot of its technologies are illegal or misrepresented. More of it is unproven, unreliable, or outright fictional. Is CSI SF or just a few years ahead of its time? Forensic IT, chemistry and engineering are making great strides. Where will they be in the next century?

Patricia MACEWEN.

**212315 - Basics of Book Design and Publishing E**

There's nothing quite like reading (or holding) a really beautiful book. The cover design, interior illustrations, type face, layout, and even paper quality all contribute to the experience. What goes into creating a satisfyingly artistic volume? How does it effect the experience of the reader? What are your favorite books?

Dave HOWELL Jennie FARIES John D. BERRY ,Kelly BUEHLER.

**212412 - History of Masquerade Costumes EJ**

We will show highlights from previous Worldcon and Costume Con masquerades in this 1 1/2 hour program.

Richard Man, Yuichiro Sakuta

**212413 - Remembering Robert Anton WILSON E**

Remembering the golden days of the geeks.

Jack William BELL ,Lou ANDERS ,Yoshio KOBAYASHI.

**212414 - Crappy Games Live (Kuso games) 2007 "It's Crazy and Funny Games!" J**

Why was this kind of stuff even invented? It's a Frankenstein's monster of the game world. The kids love to make fun of crappy games. That's how it was born, but what kind of people are they? Let's chat about the weird and strange games of the world.

Hironori Hazuki,Taishi daichi.

**212416 - Avant-Pop Revolutions J**

With the cyberpunk and slipstream movements, Avant-pop has been critically examining and deconstructing the tyranny of "pop capitalism" from the inside by blurring the boundary between avant-garde and pop culture since 1990s. Panelists will discuss the current condition of Avant-pop.

Takayuki Tatsumi,Tetsuya Satou,Yoriko Shono,Tadashi nagasawa,Christopher Bolton.

**212417 - Steampunk and Alternate History J**

The Cyberpunk movement in the 1980's combined with Tim Powers and others' Victorian Age alternative history novels' "Steam Punk" movement and gave birth in 1990 to the Steam Punk masterpiece "The Difference Engine". In this panel we will re investigate history's technology along with technology's history.

Fumio Takano,Haruaki Utsukibara,Yoshio Aramaki,Tadashi nagase,Masaaki Shindo.

**212418 - Overlooking modern Japanese SF(1): from "Godzilla" to "Japan Sinks" EJ**

The Japanese SF after losing the war started from a different place than the "science novels" of the pre-war era. What hopes and dreams did the people who boot-strapped (started up) the modern Japanese SF and the Second Generation who have inherited it. We will talk about all this from diverse angles including texts, comic books (manga not anime), and movies.

Katsuhito Morishita,Sakyo Komatsu,Takashi Ishikawa,Masaki Yamada.

**212419 - "Acacia"EJ**

G.O.D.system

**212421 - Tea party with Haruka Takachiho J**

We hold tea party with Haruka Takachiho. This year 2007 is memorial year for his 30th anniversary from debut with "Crasher Joe".

# Nippon2007

Haruka Takachiho.

## 212422 SF Classroom for Kids J

Boys and girls who came to the science fiction event with dads and moms, are you bored? What is "S-C-I-E-N-C-E F-I-C-T-I-O-N"? Why are those adults so into it? We'll tell you the secret. What are the relations between "Detective Conan" and "King Kong", "Gundam" and "Tokiwo kakeru shoyo (A Girl Who Runs Through Time)"? You'll become the doctor of science fiction after you hear this! (Attendance will be limited to children under junior high school and their guardians). Hiroshi Yamamoto.

## 212501- Tezuka was born EJ

Osamu Tezuka: No other has had such a great influence on Japan's SF Manga and Anime like this comic creator. Kenichi Kato talks about Osamu Tezuka up close and personal. Kato's father Kenichi Kato was the chief editor of "Manga Shonen" the magazine that also introduced Tezuka. What did Tezuka see in Manga and what was his goal in creating it? Takeo Kato, Baku Yumemakura, Kimiko Shimada.

## 212511 - Digital Maoism: Drowning the Individual Voice E

A book is small set of people, usually one person, authoring a story. The web turns this sideways, allowing many to collaborate, drawing upon snippets from everywhere. What effect does this have on creativity, our reading habits, and the way we process information? Is there a future for the book as we know it?

Cory DOCTOROW, Eileen GUNN, Tore Audun HOIE.

## 212514 - Doctor Who: Army of Ghost and Doomsday E

Film for Hugo Nominees

## 212599 Guest of Honor David BRIN E

David Brin's Guest of Honor presentation. This speech will be aimed primarily at the English-

speaking audience.

David BRIN.

## 212798 - Filk E

## 212997 - Painting demonstration EJ

Guest of Honor Michael Whelan, Bob EGLETON and Naoyuki KATO demonstrate painting using ideas and suggestions flown in from the audience. Michael WHELAN, Bob EGLETON, Naoyuki KATO, Hicaru Tanaka, Yasuo Kawai.

1 p.m.

## 213316 - How to walk the way of tea - Japanese tea ceremony EJ

You can learn the basics of tea ceremony from a professional teacher and with it a bit of Japan's culture. This program will also be held in English. So we highly encourage our foreign guests to participate!

- Courses are limited to 20 members and must be booked in advance

- Please have 500 Yen per person ready to pay for the tea and sweets"

## 213411 - Earth science workshop by JAMSTEC

(Japan Agency for Marine-earth Science and Technology)J

We provide three courses for study. 1st: Bioscience live in earth crust, 2nd: benthic feeder and PICASSO (robot for use in underwater), 3rd: Cloud resolution entire globe simulation and high-resolution prediction for typhoon path.

## 213415 - Fannish Inquisition I The 2009 World-

con Bids E

Kansas City and Montreal are bidding to host the 2009 Worldcon. Come hear what each bid has to say before casting your vote.

Margene BAHM ,Jim MURRAY,Rene WALLING,  
Eugene HELLER.Y

## 213418 - Overlooking modern Japanese SF(2): SF Wonderland EJ

"Star Wars", "Galaxy 999", "Gundam" were all big hits and helped SF's popularity to deeply penetrate the population. Now they influence the printed SF, and could lead to changing the Japanese culture as a whole. The panel will examine the influences, the impacts SF might have had on the behaviors and the thought processes of the Japanese people through looking as otaku, komike, kosupure, simulation warfare, and light novels, et al..

Katsuhito Morishita, Koshu Tani, Haruka Takachiho, Kazuma Shinjo.

## 213421 - The Hospital of the Future E

Given advances in medical care, what will a hospital look like in 25 years? 75? Will they even exist as the centralized entities we know and hate today?

Heidi LYSHOL ,Pat CADIGAN ,Tore Audun HOIE.

## 213502 - SF Vaudeville 2007 - Atomic Monster Ganilla -2 EJ

"Nanko Kyokudo", a new wave traditional storyteller from Kansai, revives the picture-story show, which has been a great media of Japan to the new century.

The Atomic Monster Ganilla, a creation by Shichima Sakai, the artist who had great influence to Japanese manga genre, rampages at the North Sea!! Could human being stop Ganilla?"

Nanko KYOKUDO, Taku ASHIBE.

2 p.m.

## 214301 - George TAKEI: Q & A EJ

A question and answer session with George Takei. George TAKEI.

## 214302- The Transparent Society E

David Brin wrote "The Transparent society". In it he claims that current information technology kills privacy and that we must all adjust. Related concepts are scattered through his fiction. Is it possible to put social and legal limits on the processing of private information, now and in the future?

Charles STROSS ,Chris COOPER ,David BRIN ,Dr Andrew A. ADAMS.

## 214303 - How Much Science Should SF Contain? E

Hugo Gernsback created SF to teach science. Should this be a foundational idea for SF or is it a horrible error? Why do we care whether the science is right even when the story is good? Much of SF seems to get along quite nicely with no discernable reality in its science although there is the occasional piece accorded masterpiece status "because" of its science content. Is the issue the technical details or is it a general approach to the universe that is important?

Chad ORZEL ,David M. SILVER ,Gregory BENFORD ,Stanley SCHMIDT.

## 214304 - What Do You Read Passionately Besides SF E

Is cross-genre reading all that popular? Can an author of one genre rightly expect his/her readers to follow when the author switches genres? What, as a fan, do you like to read? Do you read outside that genre? As an author, do you write outside that genre?

Grant CARRINGTON ,Kelly LINK ,Kirsten (KJ) BISHOP ,Marianne PLUMRIDGE-EGGLETON ,Susan DE GUARDIOLA ,Carolina GOMEZ LAGERLOF.

## 214412 - Golden Guidelines for Good Game Design E

All good games share a few common characteristics. This presentation for aspiring game designers and aficionados will emphasize design guidelines that can be used to determine

# Nippon2007

why some games aren't fun, whether you'll like a new game (before you play it), and what changes make the game even better.  
Dave HOWELL.

## 214413 - The Art of John PICACIO E

A slide presentation of John Picacio's artwork.  
John PICACIO.

## 214414 - SF for the Handicapped E

As the population ages, more and more people have special needs in order to function fully within society. How do those with "Special Needs" access their SF?

Lillian CSERNICA ,W A THOMASSON ,Farah MENDLESOHN.

## 214415 - Earth TV : Populer person of Paralell world J

This program is study for localization of drama and animation to foreign countries. They talk about difficulty of localize in Japan and show sample of case more familiar than original country.

Go Nkajima,Ritsushi Goto

## 214416 - SF translators are alive and kicking. J

SF translation has its own troubles and secrets. The magnate of SF translation, Asakura Hisashi, and other SF translators are inquired by a fresh blood in SF critique, winner of the 2nd SF Critique Award, Ebihara Yutaka. You can expect astonishing episodes.

Hisashi Asakura,Makoto Yamagishi,Yutaka Ebihara,Hideko Akao,Yoichi Shimada,I Under nego.

## 214417 - Otaku Express: from Tokyo to Moscow J

Be careful! Panels talks tracklessly and limitlessly about the Super-Boom on Japan in Russia from Otaku- Manga to Geisha School, Science Fiction

on Japan by Sergei Lukyanenko, and Otaku's Interaction between Russia and Japan.  
Norihiro Ohno,Fumio Takano,Mitsuyoshi Numano,Domitori Kowarenin

## 214418 - Yaoi vs. Slash J

Simultaneous rise of the culture by Female around the world----it is Yaoi and Slash Fiction. This program gets the attendance of the program participants approach the attractiveness and mystery of Yaoi / Slash Fiction through the comparison of them.

Mari Kotani,Ann Harris,Amy Thomson,Reiko Hikawa,Hisayo Ogushi,Junko Kaneda,Azusa Noa.Reona Kashiwazaki.

## 214419 - "Solaris"EJ

TOKYO DEATHLOCK

## 21421- Yuusha-no Ochakai(Hero's Tea Party) in Nippon2007 J

This is a program planned by fans of the eight anime works called the "Hero Series", from the Hero Ex Kaiser to Gaigalger the Hero King. Won't you come enjoy delicious herb tea and sweets with us?

## 214422 - Moebius, Kline, and RP-2; see the space beyond the fourth dimension EJ

An introductory lecture on Moebius Strip and Kline's vase, two regular themes in SF novels. We will do some paper crafting together in order to help our understand. Let's share some high-dimensional sensory inputs, one of the pleasures of SF.

Eiji Ogasa, Phd.

## 214501- Seikai no Densetsu(The legend of the discovery of the galaxy) J

The Urve built themselves an empire between the stars thanks to their ability to adapt to life in space by genetic manipulation. During their

invasion Jint , a boy of noble birth meets Princess Rafeel and gets dragged into the fighting.  
Hiroyuki Morioka,Takami Akai.

### 214502 - SF Rakugo <Theater Sui-Fish>

Presented by Baku Yumemakura J Rakugo (story telling) - a traditional Japanese art. Baku Yumemakura will offer a Rakugo Show he developed for Worldcon. Come in and find out! Let him entertain you for as long as you wish.  
Baku Yumemakura,Hikoichi Hayashiya,Sanyou Kanda.

### 214511- Screenings largish in our way for Denki-neko plus J

Sweeping movie collections including a new "Koi no Yurayura Dai-sakusen" and memorable "Denki-neko" are screened. Some other works created by associates of the author are scheduled for release! Canadians are particularly welcomed!!

### 214514 - The Prestige E

Film for Hugo Nominees

3 p.m.

### 215316 - How to walk the way of the flower - Ikebana EJ

"You can learn the basics of Ikebana from a professional teacher and with it a bit of Japan's culture. This program will also be held in English. So we highly encourage our foreign guests to participate!

- Courses are limited to 20 members and must be booked in advance
- Please have 1500 Yen per person ready to pay for the flowers"

### 215414 - Pyr: Upcoming Books Slideshow E

A look at Pyr's upcoming schedule.  
Lou ANDERS.

4 p.m.

### 216301- Present of Japanese special effects TV heroes J

A meeting room to discuss about the creators of the new Japanese special effects heroes including "GARO" and "Kamen rider Den-oh".

Keita Amamiya,Ichijun Kosaka,Kensho Ikeda,VIDEO Message:,Ryuta Tasaki,Makoto Yokoyama.

### 216302-SF Manga and Anime, Japanese intelligent properties J

One of Japan's new key industries. The business of content. SF Manga and Anime are produced as intellectual property and sent out into the world. With an intellectual property viewpoint the creators of SF Manga and Anime give an overview over past, present and future.

Masaki Tsuji,Go Nagai,Tou Ubukata,Youetsu Suzuki,Haruhiko Higuchi,Kimiko Shimada.

### 216303 - Interview with Naomi NOVIK E

Talking about the dragons again, sponsored by Sony Magazine.  
Naomi NOVIK.

### 216304 - Klingon: The Fastest Growing Language in the Galaxy E

"The signs are everywhere; and in a fascinating language. Meet and listen to the man who created the signs, and one of the world's foremost authorities on Klingonese.

Lawrence M. SCHOEN.

### 216315 6 - years (almost) and counting E

Sept 11, 2001; 9/11. Are the wounds still too fresh to talk about? How about 7/7? Does the rest of the world care? Can it happen again? Can

FRI Aug 31



# Nippon2007

we use it in a story? If not now, when? Is this a line that cannot be crossed?

Joe HALDEMAN ,Jon COURTENAY GRIMWOOD ,Lawrence PERSON ,Maura MCHUGH ,Pat CADIGAN.

## 216316 - How to walk the way of tea - Japanese tea ceremony EJ

You can learn the basics of tea ceremony from a professional teacher and with it a bit of Japan's culture. This program will also be held in English. So we highly encourage our foreign guests to participate!

- Courses are limited to 20 members and must be booked in advance  
- Please have 500 Yen per person ready to pay for the tea and sweets"

## 216411 - Prometheus Awards E

The Libertarian Society presents the Prometheus Awards.

Charles STROSS ,Fred C. MOULTON.

## 216412 - The State of Cosmology EJ

A look at the work being done in the field of cosmology.  
Inge HEYER.

## 216413 - The Tech Savvy Criminal E

What tools, techniques and technologies would be required today for someone to break the law and evade detection or capture? What will CSI: Mons Olympus need to keep up? This panel is for discussion purpose only, and is not intended to be a handy dandy guide to our criminal elements...

Cory DOCTOROW ,Geoffrey A. LANDIS ,Patricia MACEWEN

## 216414 - Comic Market and SF Conventions J

Yoshihiro Yonezawa, a previous representative of Comic Market who played an important role in founding it, was also an enthusiastic SF fan. In this panel we will talk about his legacy and the relation between Comic Market and SF as well

as search for the roots of Japan's biggest two fan events.

Kaoru Yasuda,Hideko Yonezawa,Hiroakio Inoue.

## 216415 - Godzilla 1954 E

Bob Eggleton speaks about Godzilla on rare materials.

Bob Eggleton,Kazuo SUMIYA.

## 216416 - Fantasy and Traditional Songs and Ballads EJ

In honor of the World Fantasy Award winning "The golden Dryd!" by Ellen Kushner and Daren Shaman, Tanaka Yasuko gives a traditional live-music presentation and author Reiko Hikawa will talk about the influence of music on fantasy.

Ellen Kushner,Delia Sherman,Reiko Hikawa,Hicaru Tanaka,yasuko.

## 216417 - New Wave and Speculative Fiction EJ

The New Wave revolution that arose in the UK and America in the 1960's cultivated the front-line of speculative fiction and also had a large influence on main-stream literature. At the same time, Japan's SF heading toward its formative period, quickly caught up with almost half a century of UK and American SF history. Now in this panel, we will re-think the role that the New Wave has played.

Mamoru Masuda,Yoshio Aramaki,Chiaki Kawamata,Hiroataka Tobi,Kouichi Yamano.

## 216418 - Women of the future Part.I: Women of the future EJ

A place where women themselves talk about the womanhood in the genre of SF. They can talk about anything they would like including women characters in the stories, or about the authors themselves. We would like them to get to know each other.

Mari Kotani,Motoko Arai,Mariko Ohara,Hisayo Ogushi,Saori Kumi,Mio Wakagi,Candasu Dohshi,Mary Nighton,Amy Thomson.

## 216419 - "Kodoku no Hoshi" (A



**Solitary Planet) EJ**

G.com Tokyo Fanastica.

**216421 - Make a Japanese Sword!**  
EJ

The Japanese sword smith Sadanaga Kobayashi will come to the Worldcon following his popular visit to the Japan SF convention in 2002 (Yukon). In case you cannot travel to Shimane Prefecture to see him, please drop by and have a look! Sadanaga Kobayashi.

**216422 - Remix Contents Festival J**

"Kasetsu genshi kenkyusyo" return to Japan SF convention. At Comic market in Spring, their show is full house all day. At Zuncon 64th Japan SF convention, the show is held in all night. From good clip films to AMV will show on screen. Hiromi Yoshida.

**216501 - Dirty Pair no Daihakai J**

The plot and the characters, who are two scantily clad beautiful girls causing unlimited destruction while completing their trouble-shooting missions, changed the Japanese entertainment SF. What has they destroyed and what has it brought? Haruka Takachiho, Yoshikazu Yasuhiko.

**216502 - SF Vaudeville 2007 - Atomic Monster Ganilla -3 EJ**

Nanko Kyokudo, a new wave traditional storyteller from Kansai, revives the picture-story show, which has been a great media of Japan to the new century.

The Atomic Monster Ganilla, a creation by Shichima Sakai, the artist who had great influence to Japanese manga genre, rampages at the North Sea!! Could human being stop Ganilla? Nanko KYOKUDO, Taku ASHIBE.

**216511 - Writing Non-Human Characters E**

It's difficult for humans to think past themselves sufficiently to create something that's more alien than an anthropomorphized Gila monster or a

psychic tarantula. How do we make non-human characters alive and real without making them copies of ourselves? ? How do we avoid cliches? Amy THOMSON, Cecilia DART-THORNTON, G. David NORDLEY, Candace Jane DORSEY.

**216599 - The Chesley Awards E**

The Association of Science Fiction & Fantasy Artists (ASFA) presents the Chesley Awards, to recognize individual works and achievements during the past year. Julie Faith RIGBY (mc).

6:30 p.m.

**217411- Doctor Nakamatsu : Congratulations the Ig Nobel prize EJ**

Congratulations the Ig Nobel prize winning patent opening to the public. In Japan, it is doctor Nakamatsu who is calling himself the genius who did the invention that exceeds 3000. Does doctor Nakamatsu's achievement pass in the foreign country? I retrieve, introduce his overseas applications, and verify the achievement. Minami OSAWA.

**217418 - Women of the future Part. II: Introducing the Tiptree Award and the Sense of Gender Award J**

James Tiptree Junior Award is given to a story that most explored the sexes, the differences, to reach a deeper level of perception about it in the SF and Fantasy genres, and the Sense of Gender Award is its sister-award. The past winners from the US and Japan will be coming to this panel to introduce those two awards.

Reona Kashiwazaki, Yutaka Ebihara, Hisayo Ogushi, Chise Kasuya, Megumi Kobayashi, Yasuhiko Nishizawa, Natsuko Mori, Kelly Link, Mari Kotani.

**217502 - Opening Animation**

# Nippon2007

## Panel Discussion J

The creative staff from the opening ceremony animation will hold a panel discussion. The staff was recruited via internet. The staff gathers for the first time for WorldCon 2007 to give the inside story about the animation process.

Kia AKITA.

## 217514 - Doctor Who: Girl in the Fireplace E

Film for Hugo Nominees.

## 218198 - Star Trek New Voyages: World Enough and Time EJ

A showing of the new production, Star Trek New Voyages: World Enough and Time. With an introduction by George TAKEI and Marc ZICREE. Japanese subtitles.

George TAKEI ,Marc ZICREE.

FRI Aug 31

1-Sep

10 a.m.

**310301 - Future of Japan Special Effects J**

Taking the special effects movie "The science of dreams jubunairu - beyond the sky" as a starting point we will discuss the future of the Japanese SFX world and the direction the younger generation of filmmakers is heading. We will also discuss the special elements of Japanese SFX with the panelists.

Kensho Ikeda, Kazuya Konaka, Jun Shiazaki, Takuji Ishida.

**310302 - Sayonara Jupiter Remake Promoting Committee EJ**

Taketoshi(?) Shimomura will debate how to remake "Goodbye Jupiter", a Sakyo Komatsu movie that came out in 1984, along with some of the people who were there, and compare it with foreign SF films.

Sakyo Komatsu, Shinji Higuchi, Kenji Iguchi, Yutaka Tsuchiya, Yutaka Yoneda, Junko Otobe, Kenju Shimomura.

**310303 - Is Science Fiction Necessary? E**

"Haven't we won? Aren't science-fictional ideas, vocabulary, themes and predictions now deeply embedded in the popular culture? Aren't a disproportionate percentage of popular movies from our genres? Don't mainstream authors dip into the slipstream every day? So, what's our mission now? What worlds are left to conquer -- and why?"

Inge HEYER, Paul CORNELL, Peter HECK, Robert Charles WILSON, Scott EDELMAN.

**310304 - The Inevitable Google Panel E**

Love it or hate it, more than half of all net users

search via Google. Is it really the end all and be all of all human knowledge? Computer knowledge? Our panelists have fun and try to predict where it will be in 2 year? 10 20? 100?

Dr Andrew A. ADAMS, Eileen GUNN, Tom GALLOWAY, Adam RAKUNAS.

**310315 - How to travel with Worldcon 2 J**

Site selection, ribbons, kaffeeklatsche, f\*\*\*, Party etc., there are many equipments and systems these are different from national convention. Here are guides for your wandering on worldcon.

**310316 - SFWA Business Meeting E**

Meeting of the Science Fiction Writers of America.

SFWA Members.

**310411 - Do fans read faster? A Speed-Reading Workshop E**

He who dies with the most books read, wins. In order to do that, it helps to read faster, which is what this workshop is all about.

Kjetill Gunnarson.

**310412 - Middle Earth - advanced civil service exam 2007 EJ**

We will hold a written exam concerning Middle Earth. Try your knowledge on Tolkien and Middle Earth in the test! An English language test paper has also been prepared. This year the exam topics will come from the "Owarazarishi Monogatari".

**310413 - What Editors Want From Artists E**

Is it realism? A particular color? Many editors return to the same artists again and again. What sets these paragons apart? Style? Originality? A distinctive look or varied approach? Reliable telepathy? (Oh, and must the artist read the story, or what?)

Bob EGGLETON, Jennie FARIES, John PICACIO, Karen Haber, Lou ANDERS.

# Nippon2007

## 310414 - Comic Market and the Otaku Industry J

Comic Market is the source of the Otaku contents that are exported overseas. In this panel we will discuss Comic Market and the Otaku industry as well as Comic Market's relationship to the creation and inside stories of SF manga and anime.

## 310415 - WSFS Business Meeting E

Every member of Nippon 2007 is a member of the World Science Fiction Society (WSFS), and is eligible to attend and vote at the Society's Business Meetings. Today most proposals to amend the WSFS Constitution will be debated and voted upon. Exercise your rights as a member.

Kevin STANDLEE ,Pat McMURRAY ,Don EASTLAKE III.

## 310416 - Multiple SF: Bridge between Japan and US EJ

The Japan-US exchanges have not stopped since from the time when SF, as the literally pursuit for adults in the new age after the war, was all in the form of text, to the present day when it has scattered and spread all over riding on the various media. We would like to consider the history of how Japan and the USA have kept company in SF through reminiscence of those who experienced the relationship firsthand, and see what the relationship might have produced through the association.

Norihiko Asao,Saki Hijiri,Hajime Ishida,Yasuo Kawai,Yuji Nishimura,David Wise,Vern Dietsche,Shinku Hidaka,Kayoko Dietsche.

## 310417 - Goth in Science Fiction J

Goth culture has spread through out today's SF and Fantasy worlds. One example of this is the Goth Loli (Gothic Lolita) style. In this panel, the panelists will reveal their Goth preferences and talk about the relevance to both genres.

Mari Kotani,Eiri Takahara,Kayoko Takahashi,Mark Driscoll.

## 310418 - Talk with Mr. Benford EJ

Mr. Benford is coming to Japan! 3 big fans of Benford, Shoji Hayashi as Hard SF writer and Mizuhito Akiyama as known as "Iriya no Sora, UFO no Natsu", Tsutomu Nihei SF cartoon writer as know as "BLAME!" intercept Benford. The host is Junichi Kadokura.

Gregory Benford,Jun'ichi Kadokura,Tsutomu Nihei,Jouji Hayashi,Mizuhito Akiyama.

## 310421 - Surgeant Keroro, is he a excellent leader? J

His operations are working well, may be."Sergeant Keroro came from the planet Keron to invade the Earth.He started many operations to conquest Tokyo (and the Earth). In spite of his hard work, his invading operation looks like hard to success.Today, we verify his operations'validity and his ability as a leader. "

Kimiko Shimada,Norma Oyama,Ikacho (Satoshi Ikarashi).

## 310501- Yoshitaka Amano talk with Nozomi Omori EJ

Nozomi Omori interview to Yoshitaka Amano, GOH of Nippon2007 about his attractive art and their secrets.

Yoshitaka AMANO.

## 310502 - Research 101 E

Writers must know what they are writing about, or must they? How much research is enough? Must you know and identify your target audience (hard science/trek/fantasy) first? Is there a minimum amount of science a SF author needs to know.

Alma ALEXANDER ,Jon COURTENAY GRIMWOOD ,Stanley SCHMIDT.

## 310511- What is Heinlein given for Science Fiction J

Yoji Kondo who is NASA Project Scientist and writer name as Eric Kotani talk about the influence of Heinlein and fascination of his books. Yoji Kondo.

**310514 - A Scanner Darkly E**

Film for Hugo Nominees

**11 a.m.****311411- Welcome to the Fantastic World of Juvenile SF EJ**

We have a long tradition of juvenile SF written or translated specifically for children. The translation is usually abridged. We'd like to show you what kind of those juvenilized works have been published and read. The most renowned writers and critics of our SF will tell you about the juvenile SF in Japan.

Yuichi Sasamoto, Housuke Nojiri, Mii Mimura, Hiroshi Yamamoto, U Takaakira.

**311417 - Somewhere between Literature and CosPlay Vol.3 J**

Gorgeous and cute Cosplay from Japan. This panel in the Gender SF Study series seeks its literary and social significance. Authors and critics who practise Cosplay will analyze various aspects of cosplay. Altering reality through their physical actions... what sort of world will they create?

Mari Kotani, Bang Ippong, Essai Ushijima, Aya Kaida, Noruma Oyama.

**311418 - What kind of man has Hoshi Shinichi been? J**

Shinichi Hoshi was the biggest star in the history of Japanese SF, and the writer who made short-stories stick in Japan.

What kind of person was he? What was he trying to accomplish as an author? We could almost see the Shinichi Hoshi that nobody knew. Motoko Arai, Hazuki Saisho, Katuhito Morishita

**311419 - "Solaris" EJ**

TOKYO DEATHLOCK

**noon****312199 - Regency Dance E**

John HERTZ, fandom's expert on the English Regency era (about the year 1800), will once again teach Regency ballroom dancing. This is a participatory event -- feel free to join in, even if you have three left feet. Costumes welcome, but not required.

John HERTZ.

**312301 Talk with Tooru Hirayama "Super Heros created by Shotaro Ishinomori" J**

Talk show of Tooru Hirayama he is live-action film creator make many heros with Shotaro Ishinomori. Talk about how to create the heros and inside story of "Uchyukarano Message" Tooru Hirayama, Makoto Aoyagi, Shocker Ono.

**312303 - The Future of War E**

Attrition warfare with men and machines is fast becoming obsolete. If the ultimate goal of war is to destroy your enemy's will to resist, with what shall we wage war in the future?

David M. SILVER Joe HALDEMAN, Lawrence PERSON, Stepehn Davis.

**312304 - Mundane or Transcendent? E**

"Many American SF writers write about the near future, the Singularity, or the far future; all completely different from our reality. Some are in favor of realism, while other prefer fantastic elements. Is this necessarily contradictory? Can we find fantastic in the real world, or write a realistic alien future?"

Charles STROSS, Cory DOCTOROW, Robert SILVERBERG.

# Nippon2007

## 312315 - Japan SF Librarian Association 9th Annual Meeting J

This year's Japan SF Librarian Association Meeting, which is the 12th, has held in WorldCon! In honor of attendances from the world, the association is expected to present a special agenda. Librarians and library users who would like to participate can participate.  
Rulisa OHSAWA (Ms.).

## 312316 - Location, Location, Location: How Setting Influences and Structures the Story E

How do the arc of the Ringworld, the hills of the Shire, the plazas of Trantor shape their stories' characters and events? Does local color bewitch or bore the reader? (Does it matter? -- why?) Are real places easier to evoke than imaginary ones? Which genre settings can't you forget?  
David D. LEVINE ,Delia SHERMAN ,Lillian CSERNICA ,Stanley SCHMIDT.

## 312411 - SF Military Explained J

Isaku Okabe, an observer of military affairs and a consultant on SF anime, and Nojiri Hosuke, author of Usurper of the Sun (Taiyo no Kandatusha), will talk about war SF.  
Isaku OKABE,Housuke Nojiri.

## 312412 - David Brin reading with origami play EJ

A Reading and origami program by GOH, David Brin.  
David Brin,Kazuo SUMIYA.

## 312413 - The Books Ate My House E

When SF fans admit (embarrassed) "I have piles," they might not mean what outsiders think. Confess the challenges of living with way too many books, and discuss possible solutions. Tesseract-shaped bookcases? Inventive new technologies (hmm, what \*is\* the insulating value of paper?)? Or even <shudder> getting rid of some...?

Allen BATSON ,Edd VICK ,Flick CHRISTIAN ,Margene BAHM.

## 312414 - Meet the John W. Campbell Award for Best New Writer Finalists E

A discussion of how the finalists for the John W. Campbell award made their professional debuts. What kind of backgrounds do they have? Where did they submit work? To what do they attribute their success?  
Jay LAKE ,John A DAVIS ,Lawrence M. SCHOEN ,Naomi NOVIK .

## 312416 - We Love Cyberpunk! J

Cyberpunk in Present Progressive Form-----Hot talks again on Cyberpunk! It has penetrated into the daily life all too soon. But it is not a memento. It is under evolution with NIPPON.  
Takayuki Tatsumi,Makoto Kikuchi,Mari Kotani,Eileen Gunn,Trinity.

## 312417 - SF Finishing Blow Lab J

Fictitious martial art which is Only young women who fell down into Meifumando can get acquire and came over to England at the end of Edo period and be taken over as legend. We research by creating the book of tradition, style and secret as SF martial arts.  
Yuji Nakazato,Bang Ippong,Hiroaki Yabunaka,Nozomu Tamaki,Nobuyoshi Yokoyama.

## 312418 - Panel Dialogue: Amano Yoshitaka vs. Bob Eggleton EJ

A panel discussion of Mr. Yoshitaka Amano, the most famous fantasy artist in Japan and Mr. Bob Eggleton, most Japanophile person in the region of US Science Fiction art. Persons for host of this discussion are Yutaka Izubuchi, Yasuo Kawai, and Hikaru Tanaka.  
Yoshitaka Amano,Bob Eggleton,Yutaka Izubuchi,Yasuo Kawai,Hicaru Tanaka

**312419 - "Kodoku no Hoshi" (A Solitary Planet) EJ**

G.com Tokyo Fanastica

**312421- The Death of Individual Innovation E**

Early SF is replete with stories about individuals who, with a single idea and lots of grit, time, funds or all three, could implement an idea with little or no outside help. Could this have happened in reality? Or was this simply a fable? Could it happen today? Or would today's society, corporations or the web doom this hapless individual to failure?

G. David NORDLEY ,Tore Audun HOIE ,Farah MENDLESOHN.

**312501 - Why do Boys Make Flying Machines? J**

"A Practical One-Passenger Jet Glider ? the Development and Trial of the Open Sky Project." The project's proposal leader and famous artist, Kazuhiko Hachiya. Author Yuichi Sasamoto. These two and their secret guest will give a tripartite talk.

Kazuhiko Hachiya, Yuichi Sasamoto, Satoru Shinohe.

**312502 - Women of Japan Panel discussion E**

Women of Japan, Laurie Toby Edison's recently completed 8 year intercultural photography project, involved both Japanese and US fans (among others) and is a featured exhibition for Nippon 2007. The images show the beauty and power of diverse Japanese women, and extend the boundaries of both Japanese and US standards for 3who2 is beautiful and 3who2 is significant. Come hear Laurie Toby Edison, and several of the women in her photographs, discuss the project and its importance.

Laurie Toby EDISON ,Junko FUKAZAWA ,Rebecca Jennison ,Manami TACHIBANA ,Mari KOTANI.

**312511 - Class-Based Societies in F&SF E**

Why do so many writers create a world with class politics, a hereditary rulership and limited social mobility? Should a democratic citizen write glowingly of kings? Is it appropriate to do so in SF set in the far future (Is Damon Knight right to criticize A.E. van Vogt)?

Cecilia DART-THORNTON ,Edward JAMES ,Heidi LYSHOL ,Grania DAVIS.

**312514 - Doctor Who: School Reunion E**

Film for Hugo Nominees

1 p.m.

**313302 - Front Line of Science and SF, to the Future! EJ**

First-line Japanese scientists and distinguished science fiction writers who are continuously giving impact on science fiction world discuss the future of science and science fiction. In section one, the future of human beings and machines will be discussed from the world-class Japanese robotics point of view.

Sakyo Komatsu, Hideaki Sena, Eimei Ooyama, Kazuo Okanoya, Shuji Kajita, Mitsuo Kawato, Yasuo Kuniyoshi, Hideyuki Nakashima, Other.

**313315 - Upcoming Del Rey Titles E**

A presentation on upcoming titles from Del Rey books.

Betsy MITCHELL.

**313413 - Heroes: The TV Series E**

Heroes has made the world safer for comics culture. The creators say they've got 5 more seasons scoped: is there enough depth to sustain that? There are more unanswered questions than ever before, not the least of which is who's cuter: Hiro or Niki? (Or Jessica?)



# Nippon2007

Maura MCHUGH ,Michele ELLINGTON ,Paul CORNELL ,Perianne LURIE.

## 313415 - About translations of Tolkien's works in Japan J

Report translations of Tolkien in Japan, based on experience of translating Unfinished Tales and helping of translation of the movie The Lord of the Rings.

TAKAHASHI Makoto.

## 313514 - V for Vendetta E

Film for Hugo Nominees

2 p.m.

## 314301 - The Affinity between Japanese Science Fiction and Screen Image / "Danwashitsu Oyakata" Special J

An opportunity to discuss about the amazement of modern Japanese science fiction field in which animation film and special effects cross fertilize with numerous variation.

Yuichi Sasamoto,Hiroyuki Ohnuma,Kensho Ikeda,Rie Tatsumi.

## 314303 - The Killer B's EJ

SF eagerly explores change driven by science and technology. David Brin, Gregory Benford, Greg Bear, Vernor Vinge and Stephen Baxter are known for successful predictions and forecasts that frighten and inspire. They were asked to complete Isaac Asimov's epochal "Robots & Foundation" universe. Some of them are here at Worldcon. Ask them what's next!

David BRIN ,Gregory BENFORD ,Robert SILVERBERG.

## 314304 - The Universal Library E

Imagine if all the information of the world was available via the web; all the books, magazine, videos, TV shows and crossword puzzles ever

produced. What would be the effect be on the world? How would it come about, and would it change the world?

Charles STROSS ,Cory DOCTOROW ,Linda ROBINETT ,Patrick NIELSEN HAYDEN ,Tom GALLOWAY.

## 314315 - SF Tribes? The New Communities in Internet Society.E

Our community has grown so big, we have many small cabals, each of which cares nothing for the others. Through the Internet, blogging and e-mails our ties are strengthened and old community values wear thin, as proved by Hurricane Katrina. Any connection there?

Lou Anders ,Mark L. Van Name ,Yoshio Kobayashi.

## 314316 - "Let's interact through SF illustrations!" The almost bilingual session. EJ

For the first step to international exchange, we'll introduce you popular SF in Japan (domestic and translation). We want to enjoy differences between illustrations of the originals and translations with you. English and Japanese legends are available.

Ryo Ishii(fuchi-koma),Noriko Maki (Meamet),Takayuki Hirabayashi.

## 314411 - Military in SF ? How real is Moonlight Mile? J

Drawing from Yasuo Otagaki's Moonlight Mile, we'll talk about a conflict in outerspace between the American and Chinese armies. Could we be seeing a similar situation in real life in the near future? Let's talk about the tendency of America and China to shoot the dice on 21st century hegemony from various angles?

Nobuhito TAKANUKI,Iwao ETOU,Yiji NAKAZATO.

## 314412 - Perry Rhodan Summer Lecture 2007 J

We will introduce the latest information about the Perry Rhodan series which reaches 2400 volumes in Germany this year to the Japanese

fans who are 1700 volumes behind.  
Yuichi Wakabayashi

### 314413 - Religion In SF E

Though their pursuits are not mutually exclusive, religion and speculative fiction are almost anathema to one another. In SF, religion is ridiculed as superstition, derided as a pursuit of less advanced minds. Why is this kind of discrimination acceptable? Why are there not more proudly religious characters in SF?

Jessica LANGER ,Kari MAUND ,Robert Charles WILSON ,William SHUNN.

### 314414 - Comic Market = SF J

A keynote speech will be given by representatives of Comic Market about it's ideas and goals. This is a great chance to hear about the real Comic Market from the words of its representatives.  
Kouichi Ichikawa.

### 314415- Making Writing More Vivid and Memorable E

How can a writer make their story particularly vivid or memorable? Show, don't tell? How else do writers bring their writing to life? Why do some passages stay with us after the book is done, but others are gone a month later. Panelists are welcome to bring their favorite passages.

Alma ALEXANDER ,Jean LORRAH ,Kirsten (KJ) BISHOP ,Jay LAKE.

### 314417 - SF Studies and SF Education EJ

With Science Fiction Research Association at its center, the role of SF in academic researches and higher education has coming under focus. We will revisit the subject and ask about its potential in the 21st century.

Takayuki Tatsumi,Takashi Ishikawa,Nagasawa Tadashi,Christopher Bolton,William Gardner,Thomas Schnellbaecher.

### 314418 - Otaku Studies J

Discussion on OTAKU theory by the authors of "MOUJOU GENRON EFU KAI" and some

additional participants. The theme is sexuality. Starting from the basic question "whether or not we should discuss about OTAKU from the standpoint of the Sexuality Theory", we want to talk over the characteristics of Genre SF. Let's join us if you want to grasp "What is MOE?"

Hiroki Azuma,Go Ito,Junko Kaneda,Tamaki Saito,Kentaro Takekuma,Mark Driscoll,Kaoru Nagayama,Mari Kotani.

### 314421 - RED DWARF Sleeping Quarters J

"SF TV Comedy RED DWARF as serious NHK(Japan Broadcasting Corporation) broadcasts it was excited at in a Japanese part.This program is performed in a seminar form about RD Japanese unscreened Sheen or another program and others which were related to RD.

Hiromitsu SAKURAI.

### 314422 - Surprised! Scientific Experiment. J

Lets make slime.

Tomoki AOYAMA,Nobuo SUMIYOSHI,Daisuke KUSAYANAGI .

### 314501 - What is Guin Saga about? J

The world's longest running fantasy-romance novel, the Guin Saga, has 115 regular volumes and 21 peripheral stories. We will look into the phenomenon from the perspectives of the illustrators, the fans, and the publishers.

Kaoru Kurimoto,Shinobu Tan-no,Katsuyoshi Tanaka.

### 314502 - Film show "Ninja gari" "Kiru" EJ

Samurai fantasy play on screen. It is masterwork of Tetsuya Yamauchi. Let's fun masterpiece of samurai drama with English caption.

Tetsuya Yamauchi,Aki Nakata.

### 314511 - Alien Sexuality E

Alien sex is frequently depicted as being the

# Nippon2007

same as human sex with differences in superficial biology. What if the Venerians are not just us with bad haircuts and bigger ... ears? How would aliens enjoy sex? Is it necessary to enjoy it? For all 2 to the x partners.

Amy THOMSON ,Anne HARRIS ,Geoffrey A. LANDIS ,Pat CADIGAN.

**3 p.m.**

## 315316 - General Meeting of the Federation of the Science Fiction Fan Groups of Japan J

This meeting must hold at Japan national SF convention. Future of convention and rule of Seiun award decided in this meeting.

## 315412 - Go worldcon with train EJ

"In first experience time of this we can translate to convention site with train. We talk about many place of Worldcon has been held where we can go with train.

Kazuo SUMIYA.

## 315417 - What's going on in German SF now? J

A program to talk about the state of SF in Germany. We want this to have a tea party sort of atmosphere. Audience participation will be welcome. Drop by as you feel like, and listen.

Yoichi Shimada, Hiroshi Igarashi, Akiyoshi Shikina.

## 315419 - "I Can't Understand Others ~ Silent Farce by Mind Reader ~" EJ

Hakoniwa-Enbukyoku

## 315599 - Hiroyuki Nanba & '87 Sense of Wonder Live J

Hiroyuki NANBA, Keisuke KOMORI, Kazuyuki KOMURO.

**4 p.m.**

## 316301- Anime Symposium TOKUMA SHOTEN Presents : Talk about "Den-no Coil(COIL A CIRCLE OF CHILDREN)" J

A chance to hold an extensive conversation about Den-no Coil(COIL A CIRCLE OF CHILDREN), which is an animation program now broadcasted by NHK television.

Hiroshi Yamamoto, Kouichi Igarashi, Kensho Ikeda(mc).

## 316303 - SUGOI KAGAKU de mamorimasu! (Guard you with astonishing science!) --- SF Prospect of Toei Super Sentai J

Once again, the customary popular event of "Sugo Kaga" in Japan SF Convention comes back. Nearly 10 years, Yuuichi Hasegawa has talked about his delusions full of love to Toei Super Sentai (Toei Super Squadron).

Yuichi HASEGAWA, Nozomi Tamaki, Yuichi Sasamoto, Kei SHIGEMA.

## 316304 - Sex and Technology E

The automobile.....the movie.....the Internet.....then? How has modern technology affected sex? What lies ahead - virtual reality harems? Computer-enhanced marital aids? The orgasmatron? What can we look forward to? (and is this all a Good Thing?)

David D. LEVINE ,Dr Andrew A. ADAMS ,Patricia MACEWEN.

## 316411- The ArchiTECHS (David Brin's TV Shows) E

Take a bunch of geniuses, give them a problem and 48 hours to solve it, then let the cameras roll to watch it happen. Two pilot episodes of this series aired on USA's History Channel. With an introduction by GOH David Brin.

## 316413 Thomas the Rhymer E

Ellen Kushner does an one woman show with

music & storytelling, reading from the novel and accompanied by singing of the ballads that inspired it. For details: <http://www.sff.net/people/kushnerSherman/Kushner/appearance.html>  
ELLEN KUSHNER.

### 316414 - Moe Stocks guide to the world J

We will do it again this year, a panel discussion by the Moe Stocks Cub. Hello, World. Come play a part in sponsoring cool Japan by buying some Japanese Moe stocks. We are NOT interested in stocks that do not tickle our fetish.  
Hidemi SASAKI, Atsushi GOTO, Hirota KIHARA.

### 316415 - Religion in Fantasy E

Does C. S. Lewis's and J. R. R. Tolkien's fantasy promoted Christianity, while Philip Pullman's subverts it? Too simplistic? How is creating a credible religion like creating a workable economy? Who are the best at this? Must you believe, even a little, in a god you make yourself?  
Lisa C. FREITAG, Esther FRIESNER, Lillian CSERNICA.

### 316416 - Is It Really Strange?: New Slipstream EJ

"Bruce Stierling coined the term Slipstream nearly twenty years ago. Since then a bunch of new writers has written a lot of that kind of unclassifiable strange fiction. But is it a type, or subgenre? One thing is clear now. Many writers in their thirties now prefer to write bizarre and surrealistic stories within our genre. And it happens in Japan, too."  
Kelly Link, Patrick Nielsen Hayden, Mark Van Name, Joshio Kobayashi.

### 316417 - The World of Queer SF Books J

In the 20th century that has passed, a huge number of SF stories were published. And there were many among those that could be called "absurd (weird)": "Fermented Man", "Fall/Hell", the Mysterious lieutenant Tenpura", these books have been forgotten as time went by. Except the

collectors of old SF books. We would like you to experience a world of dread and laughs by unpacking some of those old SF absurdities.  
Naohiko Kitahara, Jun'ya Yokota, Takashi Hoshi, Sanzo Kusaka.

### 316418 - Between "bar bara ikai" and "Poh no Ichizoku": for the faraway dream of immortality J

This year's winner of the SF grand prize: "Bar bara iKai". Isn't it a mirror image of the author's famous work of the same topic "Po no ichizoku"? Let's approach this author and look behind the structure of her works.  
Moto Hagio, Mari Kotani, Kimiko Shimada.

### 316419 - "Acacia" EJ

G.O.D.system

### 316421- Star Trek New Voyages: World Enough and Time EJ

A repeat showing of the new production, Star Trek New Voyages: World Enough and Time. Japanese subtitles.

### 316422 - Let's play Termenvox J

There is seductive sound and curious movement. Let's play Termenvox.

### 316501- The Universe as seen from the Hubble Space Telescope EJ

Inge Heyer.

### 316511 - Levels and Limits of Metafictionality E

Stories about stories. When can the teller of a story successfully interact with the story, and when is it a cheat?  
Candas Jane Dorsey, Jessica Langer, Kate Nepveu, Scott EDELMAN.

### 316514 - Stargate SG-1: 200 E

Film for Hugo Nominees

# Nippon2007

## 316996 - Women of Japan Exhibit Artists Talk (Docent) E

Women of Japan, Laurie Toby Edison's recently completed eight-year intercultural photography project, is a featured exhibition of Nippon 2007. This is the first time the finished project has been shown. The exhibition includes 40 photographs with bilingual texts and an introduction by Mari Kotani. The images show the beauty and power of Japanese women of diverse age, class, size, ability, culture and background. Together with the accompanying bilingual text, the photographs extend the boundaries of both Japanese and US standards for 3who2 is beautiful and 3who2 is significant. Some of the work has previously been shown at the National Museum of Art (Osaka), Third Gallery Aya (Osaka) and the Kyoto Art Center.

Laurie Toby EDISON.

5 p.m.

## 317198 - BANDAI VISUAL Preview Videos J

## 317514 - Precedence showing "BLUE DROP - Tenshi tachino gikyoku- J

Collaboration of Akihito Yoshitomi comic artist author of "EAT-MAN" and "RAY" and Masahiko Okura director of "Sento yousei Yukikaze" (OVA). Precedence show of story #1 and #2.

6 p.m.

## 318198 - Hugo Awards Ceremony EJ

The Hugo Awards will be presented by the World Science Fiction Society for the best works in the field for 2006.

## 2-Sep

10 a.m.

**410199 - Shotokan Karate-do Workshop E**

Would you like a simple and safe first experience in the traditional Japanese martial art of Shotokan karate-do? For many years, this workshop has been offered at Worldcons to introduce the basic mechanics of Shotokan karate-do. The underlying physical and physiological principles of distance, breathing, movement, and timing will be taught in the areas of basic motion ("kihon"), pre-arranged sequence of defense and attack ("kata"), and no-contact simulation of sparring ("kumite"). Level of effort will be no greater than low-impact aerobics, with emphasis on safety. Come dressed in light, loose-fitting clothing. Instruction will be in English.

Keith C. KATO.

**410301 - Visual Pleasure of Japanese SFX: Images begin to talk SF J**

We will talk about Japanese special effects shows past, present, and future while watching indispensable works of the genre. Will Kensho Ikeda be able to shrink down the 30 hours that he spent this year and last talking about Japanese special effects shows to just an hour and a half? Get ready for it!

Kenshoi Ikeda

**410302 - Guest of Honor David BRIN (translated) EJ**

David Brin's second Guest of Honor presentation, with material aimed for the Japanese and international members.

David BRIN.

**410303 - 30th Anniversary Chronicles of Star Wars J**

Inside stories about movies and publications

are spoken by Junzou Takagi who is involved in publishing of more than 90 % of SW related books. Tsuyoshi Nagano, an illustrator who designed SW book's jacket and cover and Kazuko Tominaga, a translator of SW books also appear as special guests on this program.  
Junzo Takagi.

**410304 - Longer life expectancy = more time to be miserable? E**

What is the maximum human lifespan? Can it be said to be worthwhile to live to 135 if 35 of those years are bedridden?

Grant CARRINGTON ,Gregory BENFORD ,Margene BAHM ,Joe HALDEMAN.

**410315 - ANIME J**

410316 - Was Margaret Mead Full of S\*\*\*? E  
Mead said "Never doubt that a small group of thoughtful, committed citizens can change the world. Indeed, it is the only thing that ever has." Many intelligent and well-informed people say Mead's philosophy is purest fantasy. Panelists discuss/debate about whether or not Mead was right.

Eileen GUNN ,Elisabeth MALARTRE ,Farah MENDLESOHN.

**410411 - History of Japanese SF Fandom J**

This panel shows the birth and history of fandom in the world of Japanese SF, centered around the pioneering role Shibano san played in it.

Takumi Shibano, Hiroyuki Namba, Shinji Kajio, Kimiko Shimada.

**410412 - Writing for TV E**

So, you want to get something on TV! What does it take: Character? Plot? Action? Romance?! Some industry veterans discuss what it takes to get there.

Halle STANFORD ,Marc ZICREE ,Paul CORNELL.

## 410413-The Economics and Sociology of Abundance E

"Over millennia, humankind has grown steadily richer. Eventually, will money no longer be an issue? How will this culture of plenty affect human motives and interactions? Are the motives we see in today's SF believable in an ultra-wealthy far-future setting?

Marianne PLUMRIDGE-EGGLETON ,W A THOMASSON ,Mike SCOTT ,Tore Audun HOIE.

## 410414 - Comic Market's Cultural Value J

We are scheduled to invite professor Yoshida, a lecturer at Tokyo University, to speak about Comic Market's role in the history of Japanese contents and give a perspective on what is to come.

## 410415 - WSFS Business Meeting E

Every member of Nippon 2007 is a member of the World Science Fiction Society (WSFS), and is eligible to attend and vote at the Society's Business Meetings. Today the results of Worldcon Site Selection will be announced and any remaining proposals from yesterday will be debated and voted upon.

Kevin STANDLEE ,Pat McMURRAY ,Don EASTLAKE III.

## 410416 - Cyberpunk Future and / or Geetstate J

The sordid image of the cyber city revealed in the world of Blade Runner still functions as the imagination central to the SF of today. And the reality is the world in which computers have entered our lives, networks cover the world, and the social order has seen some major changes with the information technology at its axis. How will cyberpunk change, how will its power of imagination evolve?

Takayuki Tatsumi,Hiroki Azuma,Hiroshi Sakurazaka.

## 410417 - Asian SF and its surroundings: Today's Situations J

We will discuss Chinese SF, current situations and attractions of the surrounding territories, and the works from the Asian countries. We would also like to talk about how the older culture and the works from there, China, may be influencing our own works in the present day.

Azami Kanou,Touya Tachihara,Renka Kin ,Song Han.

## 410418 - Pleasure of Hardcore SF J

Hard science fiction is distanced as rigid and incomprehensible, but that is not true. Hard science fiction is hidden in mystery novels, horror novels and all sorts of novels. Writers from different generations will be discussing about the pleasure of hard science fiction.

Makoto Kikuchi,Akira Hori,Joji Hayashi,Housuke Nojiri,Yasumi Kobayashi.

## 410419 - "Kodoku no Hoshi" (A Solitary Planet) EJ

G.com Tokyo Fanastica

## 410421- Small Press Publishing in the United States, Japan, Europe ... E

Some of the most exciting work in science fiction, fantasy and horror is produced by small presses. What makes a book good? Can small presses save us from degeneration? What challenges in design, production, and marketing do small presses face? Can labors of love make money?

Daniel SPECTOR,Bob EGGLETON ,Charles ARDAI ,John D. BERRY ,Kelly LINK.

## 410422 - A Look Back: Jack WILLIAMSON E

A look back at the life and works of Jack Williamson.

G. David NORDLEY ,Scott EDELMAN.

## 410501 - Is Fantasy Necessary? E

"We never would have flown without Icarus. Alchemy came before nanotech. But fantasy is

mired in kings and cookie-cutter dragons not the dreams, concerns and requirements of modern life. Fantasy can be seen as anti-democratic and racist. How can fantasy address the complexities of the 21st century? Should it?

Anne HARRIS ,Delia SHERMAN ,Esther FRIESNER ,Kirsten (KJ) BISHOP.

### 410502- Inhibited film! Minoru Kawarazaki talk about "Nippon igai zenbu chinbotsu" J

"Nippon igai zenbu chinbotsu" is parody of "Nippon Chinbotsu" (Sakyo Komatsu) written by Yasutaka Tsutsui. This story make into film in 2006, and nominate to media category of Seiun Award. Director of this film talk inside story of movie.

Minoru Kawasaki,Keizou Mezaki

### 410511 - Gibberish E

Developing a language system involves more than just removing the vast majority of the vowels in your characters' names. What distinguishes a good language system in fiction from a bad one?

Lawrence M. SHOEN ,Stanley SCHMIDT ,Mary TURZILLO.

### 410514 - Short Presentation Winner E

### 410599 - Alternate Futures E

"We talk about alternate histories, but there are also alternate futures. What futures might plausibly grow from today. Are the traditional SF futures still possible? Is history really at an end? How do you build a future anyway? How about futures based on alternate pasts -- do they count? Charles STROSS James L. CAMBIAS.

### 410798 Filk E

## 11 a.m.

### 4411303 - Upcoming from Baen Books E

Baen Books upcoming titles and publication schedule.

Mark L. VAN NAME,Jennie FARIES.

### 411422 - Movement of solar system EJ

Inge Heyer.

## noon

### 412198 - 38th Seiun Award Ceremony EJ

This is definitely ceremony in Japan national convention. Who will win for this year?

### 412199 - Qigong training (SF Fantasy Alpain Club) EJ

For celebrate first Worldcon in asia. Let's make health enhancement with Qigong training. Takeshi Makinaga,Masatoshi Kawakami,Masako Iiduka.

### 412301 - TVFantstic J

This program presents the study of US & Brit Sci-Fi TV programs from 60's to the latest. Reflecting on the past programs, Shuji Matsuoka & Kenso Ikeda try to find a guide to the future of TV programs.

Shuji Matsuoka,Kenso Ikeda.

### 412302 - Talk about difference of animation and live-action film, "Shin Onna tachigui retsuden" J

"Shin Onna tachigui retsuden" will release on November omnibus film made by five director. Mamoru Oshii and Kenji Kamiyama will talk about amenity of animation and live-action film. Mamoru Oshii, Kenji Kamiyama, Syuuichi Ono.



# Nippon2007

## 412303 - The Art of Michael WHELAN E

Guest of Honor Michael Whelan presents an overview of his work.  
Michael WHELAN.

## 412304 - Defending Public Domain from Corporate Copyright Maximalism E

Copyright is the new conspiracy. What can we do to keep public domain works public. And how do we get them to release what should be public? If a company can make a buck, it will? but where does capitalism end and copyright maximalism begin?

Cory DOCTOROW ,Inge HEYER ,Naomi NOVIK ,Patrick NIELSEN HAYDEN.

## 412411 - DiscWorld 101 EJ

"Although very popular in the UK & US, DiscWorld by Terry Pratchett isn't quite known enough in Japan, somehow. So let's talk about that fantastic world with its politics and fairy tale allegories. With the author's own messages."  
Min Onouchi.

## 412412 - Celtic and British Influenced SF and Fantasy E

Celtic and British myth and culture have profoundly influenced English-language fantasy. How much influence has it had on fantasy in other languages?  
Kari MAUND ,Cecilia DART-THORNTON ,Maura MCHUGH.

## 412413 - Future Art: What New Forms of Art might Arise from Current Technologies or Esthetics? E

Computer composition, collaborative kinetic sculpture, zero-gee dance? "Blogging" is one new candidate, as are phone-cam web journals and

"reality" television. What's likely to be next, and do we really want it?

Dave HOWELL, ,Karen HABER, ,Susan DE GUARDIOLA, ,Chris O'SHEA.

## 412414 - Creating an SF Franchise E

The story of creating Jimmy Neutron: Boy Genius, an 800 mil franchise.

John A DAVIS.

## 412416 - Cyberpunk Seen from Outside EJ

"Sure, most of us consider the cyberpunk is a history. But every new nearfuture hi-teck stories looks like cyberpunk now. So let's examine it from the fresh view points, points from outside. Japan notably welcomed it wholeheartedly in the eighties, but what was it like in Germany? Or even UK and Canada might have seen it as a curiosity. Was it really a global phenomenon?"

Coly Doctorow,Gire E. Goezen,Pat Cadigan,Yoshio Kobayashi.

## 412417 - Fantasy and Horror Fiction J

We invite the translator Massimo Somare who introduce Japanese fantasy novels in "ALIA giappone" in Italy and discuss about the fantasy novel of Japan and Latin language world.

Mitsufumi Asagure,Massimo Soumare,Osamu Makino,Hirofumi Tanaka,You Yamanoguchi,Renka Kin.

## 412418 - Interstitial Arts Foundation E

"Art that crosses boundaries."? What does this mean?? What does it include? Why does it need a Foundation?? What can the Foundation accomplish?? A talk about the Foundation, it's accomplishments and goals. <http://www.interstitialarts.org/>

Alma ALEXANDER ,Delia SHERMAN ,Ellen KUSHNER.

**412419 - "Acacia"EJ**

G.O.D.system

**412421 - The Drawing Board  
Theoretical Society J**

We will answer all your ordinary and extraordinary unanswered questions. Due to the unusual distortion of our enquiries, we ask that you bring a magnetic needle or wire for dowsing. Above all, get a good night's sleep before you come.

Noriyuki KATO,Sausu,Yasuhiro WATANABE.

**412501- Godzilla 2007 EJ**

More than 50 years have passed since Godzilla first appeared but his popularity shows no sign of fading. In fact his pan-Pacific significance has only started to grow! In this panel Japanese and American artists and authors who consider themselves as Godzilla fans will get together to discuss in detail the past, present, and future of Godzilla.

Bob Eggleton,Norman England,Hicaru Tanaka,Shinichi Wakasa,Yuji Kaida,Takayuki Tatsumi.

**412502 - Design a Truly Alien  
Alien E**

In science fiction aliens resemble humans with rubber face masks, inspired by rare terrestrial life-forms. Their behaviors, while extreme, are familiar (like Crazy uncle Ted). Is it alien if it is familiar? The panelists will be asked to conceive of the most inhuman, least earthly aliens possible. Amy THOMSON ,Geoffrey A. LANDIS ,Lawrence M. SCHOEN ,Patricia MACEWEN.

**412511 - Secrets of Athlete  
Humanoid "MANOI" J**

Kyosho demonstration thier robot named Athlete Humanoid "MANOI".

**412514 - Long Presentation  
Winner E****412996 - Women of Japan Exhibit  
Artists Talk (Docent) E**

Women of Japan, Laurie Toby Edison's recently completed eight-year intercultural photography project, is a featured exhibition of Nippon 2007. This is the first time the finished project has been shown. The exhibition includes 40 photographs with bilingual texts and an introduction by Mari Kotani. The images show the beauty and power of Japanese women of diverse age, class, size, ability, culture and background. Together with the accompanying bilingual text, the photographs extend the boundaries of both Japanese and US standards for 3who2 is beautiful and 3who2 is significant. Some of the work has previously been shown at the National Museum of Art (Osaka), Third Gallery Aya (Osaka) and the Kyoto Art Center.

Laurie Toby Edison.。

1 p.m.

**413415 - The Golden Duck  
Awards for Excellence in  
Children's Science Fiction E**

Awards being presented include The Hal Clement Award for Young Adult Literature, and The Eleanor Camerson Award for Middle Grades. Helen GBALA.

**413422 - PlaceEngine: A Location  
Estimation Platform based on  
Wi-Fi signals J**

PlaceEngine provides a service to estimate a user's current location by sensing nearby Wi-Fi signals. It does not require GPS, and is effective inside buildings and even underground. With PlaceEngine, any Wi-Fi enabled device can potentially become location aware without the need for additional hardware.

Atsushi Shionozaki.

# Nippon2007

2 p.m.

## 414198 - The Tiptree Award and the Sense of Gender Award Joint Ceremony EJ

Rika Kayama, Shinji Higuchi, Jendaa esufu kenkyuukai.

## 414301 - Why does monster appear? -chronicle of monsters and human-beings- J

Since old days, there are many history between monsters and human-beings. Why human is attracted with monsters? Let's ask to controversialist of monster active in literature, art, and visual field.

Kensho Ikeda, Chiaki Konaka, Yuji Kaida, Shinichiro Kobayashi, Kazuho Manda, Hiroko Sakurai(mc).

## 414302 - Tales From Earthsea - Universe of Scenic Art J

Youji Takeshige is involved in the creation of backgrounds or arts in a lot of animated films and known as an art director of "Tales From Earthsea (Ged's War Chronicle)" which was released last year. He appears on this program and talks about fascination of background art in the "Tales from Earthsea".

Youji Takeshige, Hiroaki Inoue.

## 414304 - Free Will? Or Neurochemistry? E

Some behaviors (anger, violence) might be neurological in nature. If these traits can be identified and treated, what implications does this have on social interactions, legal contracts and frameworks? The social contract? The idea of individual responsibility? Could we program ourselves into becoming mindless sheep? Should we?

Eileen GUNN, Jack William BELL, James L. CAMBIAS, Mary Kay.

## 414411 - Upcoming Books from Tor E

A presentation on Tor's publication schedule. Patrick NIELSEN HAYDEN, Tom DOHERTY.

## 414412 - The Bookstore Panel No. 5 J

We shall dissect the bookstore business where changes are happening with Amazon winning the net sales business and the oligopoly by the big stores.

Tetsuya KOHAMA, Aki ENOMOTO, Hirota KIHARA.

## 414413 - A "Survey of Readers" E

Farah Mendelsohn has surveyed 900+ readers. After a summation of her finding, she and the panellists will discuss her findings.

Heidi LYSHOL, Mary TURZILLO, Paul CORNELL, Farah MENDLESOHN.

## 414414 - The Legends of Comic Market J

We are scheduled to have a fun discussion by representatives and volunteers from Comic Market about interesting things that have happened at Comic Market as well as its dark secrets! Expect to hear inside stories that will only be told here!

Kouichi Ichikawa, Naoki Satomi.

## 414416 - SF and our Classics J

We will ask a group of celebrated Japanese and American authors to each name a classic work (of literature) that most influenced them. Then we will ask them all to read a passage from the works that they name, and have a free discussion about them all among themselves as the panelists. Robert Silverberg, Kazuma Shinjow, Isamu Tkahashi.

## 414417 - Educating SF Creation J

Chiaki Kawamata, who was the first to create an SF fanbase in China and who has established SF writing courses at 吳崑 and universities. We

SUN  
Sep 2

will discuss with him about the significance and possibilities of teaching creative writing.

Yan Wu, Chiaki Kawamata, Atsuko Abe, Hisayuki Hayashi.

### 414418 - All Works of Tanaka Yoshiki J

Yoshiki Tanaka debuted with ".... in the green plains" in 78 which won him the Gen Ei Jou new writer of the year award. Since then, he has won readers in the wide range of subjects from SF and Fantasy, to stories based on the Chinese history. This is a program to look back on the footsteps of Yoshiki Tanaka together with the author himself. Yoshiki Tanaka, Hirofumi Adachi.

### 414419 - "Solaris" EJ

TOKYO DEATHLOCK

### 414422- Surprised! Scientific Experiment. Let's freeze anything with the liquid nitrogen. J

While experiencing chemical experiment, become familiar in science education and Let's enjoy the feeling of SF. The world under super low temperature. We show -196C temperature world that make by liquid nitrogen. It's liquified oxygen. Ice'd of banana, Ice'd of a dry cell, and a marshmallow are you wish eat Ice'd a marshmallow?

Tomoki AOYAMA, Nobuo SUMIYOSHI, Daisuke KUSAYANAGI.

### 414501 - Video Games Have Changed Japanese CG J

The CG used in Japanese games is of the highest quality in the rest of the world. The advances of reality-quality high resolution CG combined with Japanese fantasy imagery can not be ignored. We will discuss Japanese CG and games while showing movie versions of popular games and CG images.

Saki Hijiri, Takashi Yamazaki. 4 from Game Company.

### 414502 - The Integration of Science and Religion in SF&F E

"Science Fiction is the literature of the humanist, the rationalist and the skeptic. As theoretical physicists look at the underpinnings of the physical universe, they see the presence of the hand of God. How do authors integrate religion and science? Can it only be done in fantasy?"

Lisa C. FREITAG, Robert Charles WILSON, William SHUNN, Edward JAMES.

### 414511 - The Short Story's Role in Fantastic Fiction E

Short fiction rarely gets the attention that novels do by reviewers. It is harder to sell collections and anthologies than novels. The panelists, writers and editors of short fiction discuss their thoughts about the shorter forms (short story, novelette, novella) of fantastic fiction.

Ellen DATLOW, Gavin J. GRANT, Larry NIVEN, Pat CADIGAN.

3 p.m.

### 415198 - Masquerade EJ

### 415302 - "Rocket girls" EJ

Film show of "Rocket girls" was putted on air at "WOWOW". Show will be talk with Housuke Nojiri author of "Rocket girls" and Shinya Matsuura best commentator about rockets. Housuke Nojiri, Shinya Matsuura.

### 415411 - Ted Chiang Interviewed EJ

Just nine stories so far but that are enough to prove the world he's one of the greatest science fiction writers of our time. So let's hear him talk about his new story in five years 'The Merchant and the Alchemist's Gate' and a lot more. Interviewed by a physicist Makoto Kikuchi, so it's gonna surely be deep and profound. Ted Chiang, Makoto Kikuchi.

# Nippon2007

## 415421 - SF Writing Workshop J

Targeting manuscripts that have been solicited beforehand, pros will give advice on writing techniques. From contributions and fanzines to novels, we hope people who have questions on SF technique will come. We also are happy to see people who haven't submitted anything but are interested in more information.

Yoshihiro SHIOZAWA, Mii Mimura, Katsuhito MORISHITA, Nobuyoshi YOKOYAMA, Masao HIRATA.

## 415599 - Fantastic Music Show 2007 -- Akira Kushida sings Chumei Watanabe, mini live & talk show J

This program is a small live show and a talk show. The show features two musicians. Composer Chumei Watanabe and singer Akira Kushida. We will speak about creating the music and the theme songs of the Japanese ANIME/SFX(Tokusatsu) TV programs. And, Akira sings some theme songs on the stage!

Chumei Watanabe, Akira Kushida, Haramakineko, Masaru Hayakawa, Norma Oyama.

4 p.m.

## 416301 - "Anime Symposium TOKUMA SHOTEN Presents : The Interesting Feature of Mechanical Design an Film Direction mechanism design J

Yutaka Izubuchi from "Patlabor" "Rahxephon", Shoji Kawamori from "Macross" have both started their career as a mechanical designer and later expanded their business role to general supervision and script writing. We discuss about the essence of their original creativity.

Yutaka Izubuchi, Syouji Kawamori, Syuichi Ohno, Kensho Ikeda(mc).

## 416303 - Living with Another Writer E

Robert Silverberg through the eyes of his wife, Karen Haber and vice versa.? Can two writers live together easily?? What are the joys and difficulties they share?? How does living with another writer affect one's career?? Lifestyle?? Writing style?

Karen Haber, Robert SILVERBERG

## 416304 - Origami Design EJ

I show designing origami by the method of Fumiaki Kawahata.

Kazuo SUMIYA.

## 416411 - Second Life and Other Virtual Worlds EJ

Virtual worlds are a perfect example of science fiction becoming part of mainstream culture. People work, play, and create everyday in these virtual spaces. How are these cutting-edge applications changing how we live, work, and participate in society and entertainment? And what does the future hold for storytelling and communication as the technology improves?

Adam RAKUNAS, Ken BRADY, Naoyoshi SHIMAYA, Yuki SAEKI.

## 416412 - Why FTL is Time Travel E

A slide presentation.

G. David NORDLEY.

## 416413 - Anti-Americanism E

Is it just jealousy? Or is there some basis to how most of the world feels towards the United States, the first Hyperpower the world has ever seen.

Dave LUCKETT, Gregory BENFORD, Jon COURTENAY GRIMWOOD, Maura MCHUGH.

## 416414 - Science Fiction Museum - A Virtual Tour E

Take a tour of Seattle's Science Fiction Museum & Hall of Fame, home of the Death Star and Enterprise-D. A member of the curatorial department will show you the galleries, artifacts,

and exhibitions.  
Brooks PECK.

### 416416 - Gibo Gibo 90 Minutes J

Live performance to reveal the truth behind the surprising ability of a psychic Ms. Aiko GIBO. Only by the analysis of broadcasted Visual data, we clarify her tricks, reference material to "realize" the spiritual view, and its mistakes. This program has been held in the past Japan SF Convention over ten years ago, and has won a high reputation. Taking the opportunity of the publishing of the Book from RAKKOUSHA, Inc., it will be re-produced at the Nippon2007.  
Kazuo Shimizu, Ryutarō Minakami, Tadashi Nagase.

### 416417- Literary Translation in Modern Japan and Europe J

With the Italian translator Mr. Massimo Somale (??) as the guest panelist who is tirelessly introducing Japanese fantasy novels to "ALIA giapponese" in Italy, this panel will discuss the translation work-front in Japanese and Italian anthologies, anthologies from Europe, and beyond genres.

Mitsufumi Asagure, Reiko Hikawa, Tadashi Ohta, Mayumi Shinoda, Masaki Yamada, Massimo Soumare.

### 416418 - Common Denominator of Horror: Evolution and Diffusion of Japanese Horror J

Hollywood re-makes of Japanese Horror films have been coming out one after another thrilling audiences around the world. In this panel we will discuss with people involved in making them, why Japanese Horror films, once seen overseas as art or cult movies, are now considered world class entertainment.

Saki Hijiri, Hajime Ishida, Kayoko Dietsche, Takashi Shimizu.

### 416419 - "I Can't Understand Others ~ Silent Farce by Mind

### Reader ~ "EJ

Hakoniwa-Enbukyoku

### 416422 - Experiment Orbit of Planet EJ

Inge Heyer.

### 416501 - Let's Dance Hare-hare-yukai! EJ

The ending theme song of The Melancholy of Haruhi Suzumiya(TV). You can be taking the lesson and practice of the dance.

### 416502 - Tesla-Gernsback Continuum EJ

Inventor Nikola Tesla played a big role in the stories his friend Hugo Gernsback published in pulp SF magazines. One of his inventions, the "Tesla Coil" was used by magician Christopher Priest and has even influenced the cyberpunk movement. We have re-examined this classic SF invention and will perform a "Tesla Coil" experiment.

Mitsuhide Yakushiji, Makoto Kikuchi, Eileen Gunn, Tsukasa Shikano, Masaaki Shindo.

### 416511 - Lost Tribes of Cult novels E

"Where have the cult novels gone? They were once legion; "Stranger in a Stranger Land", "Cat's Cradle", "The Lord of the Rings", "Illuminatus!", "Even Cowgirls Get the Blues", "Neuromancer" and "The Wasp Factory". But what about "Snow Crash" and "Harry Potter"? Why aren't they cult novels?

Elizabeth Anne HULL, Gavin J. GRANT, Yoshio KOBAYASHI.

5 p.m.

## 417303 - Miss Piggy and Godzilla E

We have fun and speculate on some interesting dates. Poor Godzilla.

Amy THOMSON ,David D. LEVINE ,Tom GALLOWAY

3-Sep

10 a.m.

## 510301 - The History of Your World E

"The layers of deep history underlaying Lord of the Rings gave it a depth and richness missing from Conan. Does a world need a history which rarely shows up in the stories. If so, how is it built? On what is it based? Can there be too much history?

Ellen KUSHNER ,Esther FRIESNER ,Lawrence M. SCHOEN.

## 510411 - Blogging and Live Journals in SF E

Blogging (and related activities) are having an impact on the world at large, and the SF community in particular. Blogs tell us more about the people in the field, the way the field works, and who is who -- and at a pace and a distribution that few if any fanzines ever matched. Blogs influence the directions of our community, can impact awards by making works or their creators better known, and perhaps even influence the works being created. Or is the impact overstated, as all things net related seem to be? Can writers use blogs to market themselves? Are blogs a way to engage the community? And is this true worldwide, or is it just an US-centric fad? Or even the English speaking world?

Adam RAKUNAS ,Chad ORZEL ,Yoshio KOBAYASHI ,Patrick NIELSEN HAYDEN ,Paul CORNELL.

## 510412 - Visiting Japan 2 E

The Worldcon is nearly over.? Use this opportunity to meet up with other science fiction fans who plan to explore Japan or talk with folks who have already had the opportunity to tour Japan.?

Inge HEYER ,Michele ELLINGTON.

SUN Sep 2

SUN Sep 3

## 510413 - The Singularity: How to Write About It E

The singularity may be the most interesting idea to come out of SF, yet may pose a challenge which may be insurmountable? how to set a story in a world which is, by definition, incomprehensible? If a singularity lurks about a hundred years after the invention of the computer: does this mean that hard SF is a contradiction in terms once it gets outside the near future? Can SF stories cope? Or should writers just ignore it and move on?

Charles STROSS, Gregory BENFORD, David D. LEVINE, Jack William BELL.

## 510414 - Mysteries: Cross-Overs, Overlaps and Marketing E

Some fans read both mysteries and SF/F, while others read from only one genre. But when Glen Cook's works show up on the mystery shelves, and Laurel K. Hamilton's are now labeled SF/F, what difference do marketing lines and writing styles make?

Carolina GOMEZ LAGERLOF ,Chris COOPER ,Marianne PLUMRIDGE-EGGLETON ,Mark L. VAN NAME ,Patricia MACEWEN.

## 510416 - Video game "Senjo no Kizuna" meeting J

Have you ever seen four egg-shaped pods lined up at the local game center? Those are "Mobile Suit Gundam Senjo no Kizuna"! What a wonderful age we live in when even adults can go crazy about this game?

NetaLaw, Raimond Hooter.

## 510418 - Denvention3 and the 2009 Worldcon E

Questions and answer session for next year's Worldcon and the winner of the 2009 bid.

Kent BLOOM ,2009 Committee.

## 510419 - Masquerade Postmortem EJ

Masquerade staff and judges will answer

questions and get feedback from entrants and audience members on how the Masquerade ran. Any award winners unable to receive their awards at the Masquerade may pick up their certificates at this panel. Entrants may also pick up their judging Polaroids, music source, and any documentation provided for the judges at this time.

Essai Ushijima, Sanbi (Carole) Parker, Karisu, John Hertz, Sakuta Yuichiro.

11 p.m.

## 511302 - Exploring Mars: The Inside Story E

When SF explores Mars, it is done by military spacecraft or eccentric scientists in secret. Why is the reality so very different? What are the years of preparation, team building, and ideas like? Can the individual participate and make a difference? Is it as fun and exciting as the fiction?

Geoffrey A. LANDIS ,G. David NORDLEY ,Mary TURZILLO.

## 511417 - The Zygote Panel E

The last panel of the convention. We talk about Zygotes or whatever other fancy comes to mind.

James L. CAMBIAS, Diane KELLY.

## 511418 - Fannish Inquisition II: Post 2009 bids E

Information from possible NASFiC Bids and future Worldcon bids.

Alexander VON THORN ,Marah SEARLE-KOVACEVIC.

noon

## 512198 - Closing Ceremonies EJ



## PARTICIPANT INDEX

Name	Program
Abe, Atsuko	414417
Adachi, Hirofumi	414418
ADAMS, Andrew A.	214302, 310304, 316304
Akai, Takami	214501
Akao, Hideko	214416
AKITA, Kia	217502
Akiyama, Mizuhito	310418
ALEXANDER, Alma	113513, 210399, 212303, 310502, 314415, 412418, 416317
Amamiya, Keita	216301
Amano, Yoshitaka	117416, 310501, 312418
ANDERS, Lou	210304, 212413, 215414, 310317, 310413, 313399, 314315
AOYAMA, Tomoki	211422, 314422, 414422
Arai, Motoko	216418, 311418
Aramaki, Yoshio	212417, 216417
ARDAI, Charles	214513, 314317, 316399, 410421
Asagure, Mitsufumi	412417, 414399, 416417
Asakura, Hisashi	214416
Asao, Norihiko	310416, 312399
ASHIBE, Taku	211502, 213502, 216502
Azuma, Hiroki	314418, 410416
BAHM, Margene	114414, 213415, 312413, 410304
BATSON, Allen	210417, 312413
BELL, Jack William	113303, 212413, 215317, 414304, 510413
BENFORD, Gregory	115399, 210301, 214303, 310418, 314303, 410304, 414317, 416413, 510413
BERRY, John D.	212315, 410421
BISHOP, Kirsten (KJ)	214304, 217513, 313317, 314415, 410501
BLOOM, Kent	510418
BOLTON, Christopher	115399, 211317, 212416, 314417

Name	Program
BRADY, Ken	115317, 211316, 416411
BRIN, David	115501, 117416, 212599, 214302, 310317, 312412, 314303, 316411, 410302, 413399, 414317
Brown, Rachel	210303
BUEHLER, Kelly	212315
BUESCHER, Julianne	210303
CADIGAN, Pat	116317, 213421, 216315, 311399, 314511, 412416, 414511
CAMBIAS, James L.	114421, 210513, 216317, 410599, 414304, 511417
CARRINGTON, Grant	214304, 410304, 510316
Chiang, Ted	415411
CHRISTIAN, Flick	116414, 312413
COOPER, Chris	113303, 214302, 510414
CORNELL, Paul	113413, 115399, 212317, 310303, 313413, 410412, 414413, 416513, 510411
CSEERNICA, Lillian	113413, 211412, 214414, 312316, 316415, 414399
Daichi, Taishi	212414
DATLOW, Ellen	210304, 212302, 310317, 412399, 414511
DAVIS, Grania	312511, 317399, 415317
Davis, Stepehn	312303
DAVIS, John A	312414, 412414
Dietsche, Kayoko	310416, 416418
Dietsche, Vern	310416
DOCHERTY, Vincent	211599

Name	Program
DOCTOROW, Cory	116422, 211513, 212511, 216413, 312304, 314304, 410317, 412304, 412416
DOHERTY, Tom	414411
Dohshi, Candasu	216418
DORSEY, Candas Jane	214317, 216511, 315513, 316511, 413399
Driscoll, Mark	310417, 314418
EASTERBROOK, Martin	115417
EASTLAKE_III., Don	210415, 310415, 410415
Ebihara, Yutaka	214416, 217418
EDELMAN, Scott	114513, 210412, 216399, 316511, 410422, 411317
EDISON, Laurie	Toby
EGGLETON, Bob	212997, 216415, 310413, 312418, 410421, 412501, 414399
EGGLETON, Marianne PLUMRIDGE	214304, 410413, 510414
ELLINGTON, Michele	114421, 313413, 316317, 510412
England, Norman	412501
ENOMOTO, Aki	414412
ETOU, Iwao	314411
FARIES, Jennie	212315, 310413, 411303
FREITAG, Lisa C.	116422, 316415, 414502
FRIESNER, Esther	116303, 215399, 313513, 316415, 410501, 413317, 510301
Fujita, Junichi	210198
Fujita, Masaya	317412
FUKAZAWA, Junko	312502
Fukazawa, Mishio	210416
GALLOWAY, Tom	310304, 314304, 417303
Gardner, William	314417
GBALA, Helen	413415
Goezen, Gire E.	412416
GOTO, Atsushi	316414
Goto, Ritsushi	214415

Name	Program
GRANT, Gavin J.	210304, 212302, 217317, 414511, 416511
GRIMWOOD, Jon COURTENAY	116413, 211399, 216315, 310502, 312317, 411513, 416413
GUARDIOLA, Susan DE	113413, 211412, 214304, 412413
GUNN, Eileen	210417, 212511, 217317, 310304, 312416, 316513, 410316, 414304, 416502
Gunnarson., Kjetill	310411
HABER, Karen	310413, 412413, 416303
Hachiya, Kazuhiko	312501
Hagio, Moto	316418
HALDEMAN, Gay	115417, 210412, 211412
HALDEMAN, Joe	116399, 212302, 216315, 312303, 410304, 412317, 413513
Han, Song	410417
HARRIS, Anne	210399, 214418, 314511, 410501, 417317
HASEGAWA, Yuichi	316303
HATTORI, Ayumi	210422
Hayakawa, Masaru	415599
Hayashi, Hisayuki	211417, 414417
Hayashi, Jouji	310418, 410418
Hayashiya, Hikoichi	214502
HAYDEN, Patrick NIELSEN	116422, 211412, 215317, 314304, 316416, 412304, 414411, 510411
Hazuki, Hironori	212414
HECK, Peter	113418, 116413, 213317, 310303
HELLER, Eugene	213415
HERTZ, John	113413, 114417, 312199, 510419
HEYER, Inge	116414, 210413, 216412, 310303, 313317, 316501, 411422, 416422, 412304, 510412
Hidaka, Shinku	310416

# Nippon2007

Name	Program
Higuchi, Haruhiko	216302
Higuchi, Shinji	310302, 414198
Hijiri, Saki	310416, 414501, 416418
Hikawa, Reiko	210416, 214418, 216416, 416417
Hirabayashi, Takayuki	314316
HIRATA, Masao	415421
Hobb, Robin	210416, 215399, 412317
H Φ IE, Tore Audun	212511, 213421, 312421, 410413
Hooter, Raymond	117415, 510416
Hori, Akira	410418
Hoshi, Takashi	316417
HOWELL, Dave	113418, 212315, 214412, 412413
HULL, Elizabeth Anne	416511
Ichikawa, Kouichi	314414, 414414
Igarashi, Hiroshi	315417
Igarashi, Kouichi	316301
Iguchi, Kenji	310302
Iiduka, Masako	412199
Iino, Fumihiko	216399
Ikacho,	310421
Ikeda, Kensho	216301, 310301, 314301, 316301, 410301, 412301, 414301, 416301
Inoue, Hiroaki	117416, 216414, 414302
Ippong, Bang	311417, 312417
Ishida, Hajime	310416, 416418
Ishida, Takuji	310301
Ishii, Ryo	314316
Ishikawa, Takashi	212418, 314417
Ito, Go	314418
Izubuchi, Yutaka	312418, 416301
JAMES., Edward	212303, 312511, 414502
Jennison, Rebecca	312502
Kadokura, Jun'ichi	310418, 312302
Kaida, Aya	311417
Kaida, Yuji	412501, 414301
Kajio, Shinji	410411, 411411, 414399

Name	Program
Kajita, Shuji	313302
Kanda, Sanyou	214502
Kaneda, Junko	214418
Kaneda, Junko	314418
Kanou, Azami	410417
Karisu,	510419
Kashiwazaki, Reona	214418, 217418
Kasuya, Chise	217418
KATO, Naoyuki	212997
KATO, Noriyuki	412421
KATO., Keith G.	210302, 410199
Katoh, Takeo	212501
Kawai, Yasuo	212997, 310416, 312418
Kawakami, Masatoshi	412199
Kawamata, Chiaki	216417, 414417
Kawamori, Syouji	416301
Kawasaki, Minoru	410502
Kawato, Mitsuo	313302
Kay, Mary	414304
Kayama, Rika	414198
KELLY, Diane	511417
KIHARA, Hirotaka	316414, 414412
Kikuchi, Makoto	312416, 410418, 415411, 416502
Kin, Renka	410417, 412417
Kitahara, Naohiko	316417
Kitano, Yusaku	315416, 316399
Kobayashi, Megumi	217418
Kobayashi, Sadanaga	216421
Kobayashi, Shinichiro	414301
Kobayashi, Yasumi	410418
KOBAYASHI, Yoshio	116417, 210304, 212413, 314315, 316416, 412416, 416511, 510411
KOHAMA, Tetsuya	414412
Komatsu, Sakyō	117416, 210501, 212418, 310302, 313302
KOMORI, Keisuke	315599
KOMURO, Kazuyuki	315599

# POCKETPROGRAMGUIDE

Name	Program
Konaka, Kazuya	310301
Kondo, Yoji	310511
Kosai, Tadashi	210501
Kosaka, Ichijun	216301
Kotani, Mari	214418, 216418, 217418, 310417, 311417, 312416, 312502, 314418, 316418
KOVACEVIC., Marah	SEARLE
Kowarenin, Domitori	214417
Kumi, Saori	214316, 216418
Kuniyoshi, Yasuo	313302
Kurimoto, Kaoru	314501
Kusaka, Sanzo	316417
KUSAYANAGI, Daisuke	211422, 314422, 414422
Kushida, Akira	415599
KUSHNER, Ellen	116399, 210412, 210416, 216416, 312513, 316413, 412418, 417317, 510301
KYOKUDO, Nanko	211502, 213502, 216502
LAGERLOF, Carolina GOMEZ	210301, 214304, 510414
LAKE, Jay	310317, 311513, 312414, 314415
LANDIS, Geoffrey A.	116412, 216413, 212301, 310513, 312399, 314511, 410317, 412502, 511302
LANGER, Jessica	113413, 114414, 213317, 314413, 316511
LEVINE, David D.	113303, 116303, 212317, 312316, 316304, 417303, 510413
LINK, Kelly	214304, 217418, 316416, 410421
LORRAH, Jean	116412, 211399, 314415
LUCKETT, Dave	116303, 212399, 216513, 416413
LURIE, Perrienne	115417, 211599, 313413
LYSHOL, Heidi	213421, 312511, 414413

Name	Program
MACEWEN., Patricia	114413, 212304, 216413, 316304, 412502, 510414
Maki, Noriko	314316
Makinaga, Takeshi	412199
Makino, Osamu	412417
Makoto, TAKAHASHI	313415
MALARTRE, Elisabeth	210301, 410316
Man, Richard	212412
Manda, Kazuho	414301
Masuda, Mamoru	216417
Matsuoka, Shuji	412301
MAUND, Kari	116513, 210302, 314413, 412412
MCHUGH, Maura	216315, 313413, 412412, 416413
McMURRAY, Pat	210415, 310415, 410415
MENDLESOHN, Farah	114414, 116422, 210302, 214414, 312421, 410316, 414413
Mezaki, Keizou	410502
Mimura, Mii	311411, 415421
Minakami, Ryutaro	416416
MITCHELL., Betsy	313315
Mori, Natsuko	217418
Morioka, Hiroyuki	210421, 214501
Morishita, Katsuhito	212418, 213418, 311418, 415421
MOULTON., Fred C.	216411
MURRAY, Jim	213415
Nagai, Go	216302
Nagasawa, Tadashi	314417
nagasawa, Tadashi	212416
Nagase, Tadashi	212417, 416416
Nagayama, Kaoru	314418
Nakagaki, Koutaro	113411, 115411, 117411
Nakajima, Go	214415
Nakajima, Shigeo	314416
Nakashima, Hideyuki	313302
Nakata, Aki	116502, 314502

# Nippon2007

Name	Program
Nakazato, Yuji	312417, 314411
Namba, Hiroyuki	315599, 410411
neko, Haramaki	415599
Nepveu, Kate	316511
Neta_law,	510416
Nighton, Mary	216418
Nihei, Tsutomu	310418
Nishimura, Hajime	113511
Nishimura, Yuji	310416
Nishizawa, Yasuhiko	217418
NIVEN, Larry	217399, 212302, 414511, 510317
Noa, Azusa	214418
Nojiri, Housuke	311411, 312411, 410418
NOMURA, Takemasa	113514
NORDLEY, G. David	114418, 210302, 216511, 311399, 312421, 317513, 410422, 413317, 416412, 511302
NOVIK, Naomi	215513, 216303, 312414, 315399, 412304
Numano, Mitsuyoshi	214417
O'BRIEN., Terry	113413, 114421
Ogasa, Eiji	214422
Ogushi, Hisayo	214418, 216418, 217418
Ohara, Mariko	216418
Ohishi, Masaru	113415
Ohno, Masahiro	113415
Ohno, Norihiro	214417
Ohno, Syuichi	211417, 416301
Ohnuma, Hiroyuki	314301
OHSAWA, Rulisa	312315
Ohta, Tadashi	416417
OKABE, Isaku	312411
Okanoya, Kazuo	313302
Okubo, Masako	314416
Omori, Nozomi	116417, 310501
Onouchi, Min	412411
Oohashi, Kouichi	115416
Ooyama, Eimei	313302

Name	Program
ORZEL, Chad	214303, 510411
OSAWA, Minami	217411
O'SHEA, Chris	114417, 412413
Otobe, Junko	310302
Oyama, Noruma	310421, 311417, 415599
Parker, Sanbi (Carole)	510419
PECK, Brooks	416414
PERSON, Lawrence	216315, 312303
PICACIO, John	214413, 310413, 312399
Qin, Li	211417
RAKUNAS, Adam	211316, 310304, 416411, 510411
RIGBY, Julie Faith	216599
ROBINETT, Linda	212303, 314304
SAEKI., Yuki	416411
Saisho, Hazuki	311418
Saitani, Umetaro	113415
Saito, Eiichiro	316412
Saito, Tamaki	314418
Sakkurai, Hiroko	414301
SAKURAI, Hiromitsu	314421
Sakurazaka, Hiroshi	410416
Sakuta, Yuichiro	212412, 510419
SAPIENZA Jr., John T.	113418
SASAKI, Hidemi	316414
Sasamoto, Yuichi	311411, 312501, 314301, 316303
Satomi, Naoki	210414, 414414
Satou, Tetsuya	212416
Sausu,	412421
SCHMIDT, Stanley	214303, 216399, 310502, 312316, 316317, 410511
Schnellbaecher, Thomas	314417
SCHOEN, Lawrence M.	116412, 213399, 216304, 311317, 312414, 314513, 410511, 412502, 510301
SCOTT, Mike	211599, 410413
SEGAL, Stephen	511317
Sena, Hideaki	313302

Name	Program
Senowo, Yufuko	210416
SHERMAN, Delia	117513, 216416, 312316, 315399, 410501, 412418, 416317
Shiazaki, Jun	310301
Shibano, Takumi	115416, 117416, 410411
SHIGEMA, Kei	316303
Shikano, Tsukasa	416502
Shikina, Akiyoshi	315417
Shimada, Kimiko	212501, 216302, 310421, 316418, 410411
Shimada, Yoichi	214416, 315417
SHIMAYA, Naoyoshi	416411
Shimizu, Kazuo	416416
Shimizu, Takashi	416418
Shimomura, Kenju	310302
Shindo, Masaaki	212417, 416502
Shinjo, Kazuma	213418, 414416
Shinoda, Mayumi	416417
Shinohe, Satoru	312501
Shinosaki, Sami	210416
Shionozaki, Atsushi	413422
Shiozawa, Yoshihiro	211417, 415421
Shirotani, Sayako	314416
SHITO, Reisa	210422
Shono, Yoriko	212416
SHUNN, William	312317, 314413, 414502
SICLARI, Joe	210511
SILVER, David M.	116422, 210302, 214303, 312303
SILVERBERG, Robert	210301, 312304, 314303, 411399, 414416, 416303
Soumare, Massimo	412417, 416417
SPECTOR, Daniel	410421
STANDLEE, Kevin	115999, 121999, 210415, 310415, 410415, 510415
STANFORD, Halle	210303, 410412
STODDARD, Jason	211316

Name	Program
STROSS, Charles	114317, 214302, 216411, 312304, 314304, 410599, 412399, 414301, 417513, 510413
SUMIYA, Kazuo	216415, 312412, 315412, 416304
SUMIYOSHI, Nobuo	211422, 314422, 414422
Suter, Rebecca	212416
Suzuki, CJ (Shige)	113411, 115411, 117411
Suzuki, Youetsu	216302
TACHIBANA, Manami	312502
Tachihara, Touya	410417
Takaakira, U	311411
Takachiho, Haruka	212421, 213418, 216501
Takagi, Junzo	410303
Takahara, Eiri	310417
Takahashi, Kayoko	310417
Takano, Fumio	212417, 214417
TAKANUKI, Nobuhito	314411
TAKEI, George	214301, 216399, 218198, 313998
Takekuma, Kentaro	314418
Takeshige, Youji	414302
Tamaki, Nozomu	312417, 316303
Tanak, Yoshiki	413399, 414418
Tanaka, Hicaru	212997, 216416, 312418, 412501
Tanaka, Hirofumi	312302, 412417
Tanaka, Katsuyoshi	314501
Tanaka, Koji	210501
Tani, Koshu	210501, 213418
Tan-no, Shinobu	314501
Tasaki, Ryuta	216301
Tatsumi, Rie	314301
Tatsumi, Takayuki	212416, 312416, 314417, 410416, 412501
THOMASSON, W A	214414, 410413

# Nippon2007

Name	Program
THOMSON, Amy	116413, 210511, 211317, 213399, 214418, 216418, 216511, 314511, 412502, 414513, 417303
THORN, Alexander VON	511418
THORNTON, Cecilia DART	216511, 312511, 412412
Tkahashi, Isamu	414416
Tobi, Hirotaaka	216417
Tohno, Tsukasa	210501
Toshiko, SHICHIKI	113416
Toshinami, Yukinori	115416
Trinity,	312416
Tsuchiya, Yutaka	310302
Tsuji, Masaki	216302
Tsuji, Rui	117415
TURZILLO, Mary	115513, 210417, 410511, 414413, 511302, 511317
Ushijima, Essai	311417, 510419
Utsukibara, Haruaki	212417
VAN NAME, Mark L	113303, 213513, 314315, 316416, 411303, 510414
VICK, Edd	212513, 312413
Wada, Yasuyosshi	115416
Wakabayashi, Yuichi	314412
Wakagi, Mio	216418
Wakasa, Shinichi	412501
WALLING, Rene	113413, 213415
Watanabe, Chumei	415599
WATANABE, Yasuhiro	412421
WHELAN, Michael	115317, 117416, 212997, 313399, 314317, 412303
WILSON, Robert Charles	113317, 212303, 217399, 310303, 314413, 410513, 414502
Wise, David	310416
Wu, Yan	414417

Name	Program
Yabunaka, Hiroaki	312417
Yakushiji, Mitsuhide	416502
YALOW, Ben	212303
Yamada, Masaki	210501, 212418, 416417
Yamagishi, Makoto	214416
Yamamoto, Hiroshi	210418, 212422, 214399, 311411, 316301
Yamano, Kouichi	216417
Yamanoguchi, You	412417
Yamaoka, Ken	115416
Yamauchi, Tetsuya	314502
Yamazaki, Takashi	414501
Yao, Haijun	211417
Yasuda, Kaoru	216414
Yasuhiko, Yoshikazu	216501
yasuko,	216416
Yokota, Jun'ya	316417
Yokota, Mitsuhiro	117414
Yokoyama, Makoto	216301
YOKOYAMA, Nobuyoshi	312417, 415421
Yoneda, Yutaka	310302
Yonezawa, Hideko	216414
Yoshida, Hiromi	216422
Yoshikawa, Suguru	312411
Yumemakura, Baku	212501, 215399, 214502
ZICREE, Marc	116317, 218198, 410412, 412513, 413399

**NOTE**





	THU Aug 30	FRI Aug 31	SAT Sep 1	SUN Sep 2	MON Sep 3
10 a.m.					
11 a.m.					
noon					
1 p.m.					
2 p.m.					
3 p.m.					
4 p.m.					
5 p.m.					
6 p.m.					
7 p.m.					
8 p.m.					

### Nippon2007 POCKET PROGRAM GUIDE (English)

Nippon2007 Committee / JASFIC

604, 4-20-5, Mure, Mitaka-Shi, Tokyo  
JAPAN 181-0002  
fax +81422-72-0901

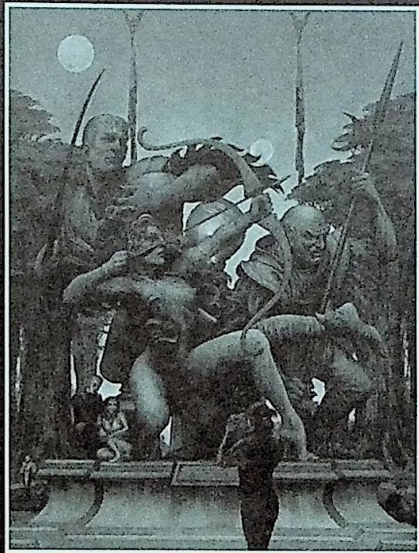
Printing : KYOSHIN PRINTING CO.,LTD  
Aug 30, 2007

Printed in Japan

'World Science Fiction Society', 'WSFS', 'World Science Fiction Convention', 'Worldcon', 'NASFIC', and 'Hugo Award' are service marks of the World Science Fiction Society, an unincorporated literary society.

'Nippon2007' is a service mark of Japanese Association for Science Fiction International Communication(JASFIC), a registered non profit organization in Japan.

# ロバート A. ハインライン



ロバート・アンソン・ハインライン(Robert Anson Heinlein, 1907年7月7日-1988年5月8日)はアメリカのSF作家で、アンソン・マクドナルド名義で執筆していた時期もあります。SF界を代表する作家のひとりで、アイザック・アシモフ、アーサー・C・クラークと並んで、世界SF界のビッグスリーとも呼ばれており、ハインラインに影響を受けたSF作家は数知れません。

---

#### コンタクト先

#### Robert A. and Virginia Heinlein Prize Trust

3106 Beauchamp 2nd Floor, Houston, TX 77009 USA

URL: <http://www.heinleinprize.com/>

お問い合わせ: [info@heinleinprize.com](mailto:info@heinleinprize.com)

---

#### The Heinlein Society

PO Box 1254 Venice, California 90294 USA

URL: <http://www.heinleinsociety.org/index.html>

メンバーシップに関するお問い合わせ: [MembershipServices@heinleinsociety.org](mailto:MembershipServices@heinleinsociety.org)

Name

FRED MOULTON

---